

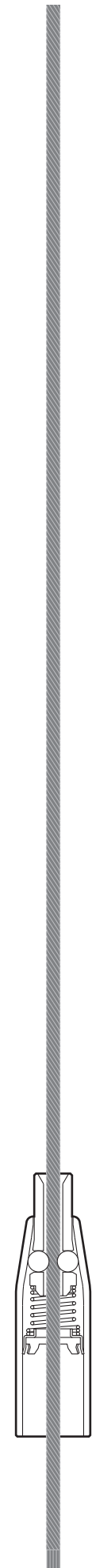


PRODUCTS  
Global

03

arakawagrip-global.com

50th  
Anniv.



**ARAKAWA GRIP**



信頼と技術の  
アラカワ

Technology  
and Reliability

荒川技研工業株式会社

本社・表参道オフィス&ショールーム  
東京都渋谷区神宮前 5-7-12 〒150-0001

ARAKAWA & CO.,LTD.

HEAD OFFICE・OMOTESANDO OFFICE & SHOWROOM  
5-7-12, JINGUMAE, SHIBUYA-KU, TOKYO

※当社の製品は特許製品です。[国内外特許・商標登録・実用新案 欧米各国特許]

※安全のため、ご使用の際は **A** マークをお確かめ下さい。

© ARAKAWA

仕様および価格は、改良等のため予告なく変更する場合があります。

2022 AF 2211

The products are patented.

For your safety, make sure that the products bear the "A" mark.

All specifications and prices are subject to change without notice.

CONTENTS

Factory tour2

what is ARAKAWA GRIP?4

what is ARAKAWA GRIP?4  
Safe Working Load4  
Features4  
how to use ARAKAWA GRIP?5  
Safety Instructions6  
Attention7  
Applications8

picture hanging systems12

ITEM MAP14  
picture rail for picture hanging16  
make a loop with wire24  
wire25  
hook26  
security hook27

wire hanging systems28

ITEM MAP30  
picture rail for display and picture hanging34  
  
ceiling -point-42  
recessed43  
nut anchor45  
bolt anchor, universal46  
make a loop47  
make a loop with wire48

midway50  
hook51  
security hook53  
ring54  
pipe55  
shelving56  
glass / acrylic shelving59  
panel62  
screw70  
object71  
mounted72

floor74  
anchor75  
screw76  
floor mounted77  
hook79  
wire end79

wire80

INDEX82



LONG LIFE

DESIGN AWARD



Arakawa Grip wins Good Design  
Long Life Design Award 2022 in Japan.





## Factory tour

# Creating New Values



Video

## Creating something original

"*Creating something original*" is the founding principle of ARAKAWA & CO., LTD. that Dr. Arakawa set when he started the business. Following this principle, his three sons now run the company, Mr. Hajime Arakawa as its president, Mr. Hitoshi Arakawa representing Manufacturing, and Mr. Makoto Arakawa representing Marketing and Sales Promotion. We are committed to creating new values and exploring what's next with our key product called ARAKAWA GRIP, a highly potential cable gripping device that can be used in various ways.



## Manufactured at our own factory

Arakawa's products are manufactured at the company's Tokorozawa factory, located in a calm suburban neighborhood where you can find some tea gardens. We have approximately 30 employees working at this facility. We place orders for materials, machine, assemble, inspect and ship our items, and also design and develop our products here. With the latest equipment and select materials, high quality products are manufactured by experienced engineers who have advanced machining skills. Our ongoing efforts include saving time and reducing manufacturing cost so we can increase productivity and maintain constant supply of products.

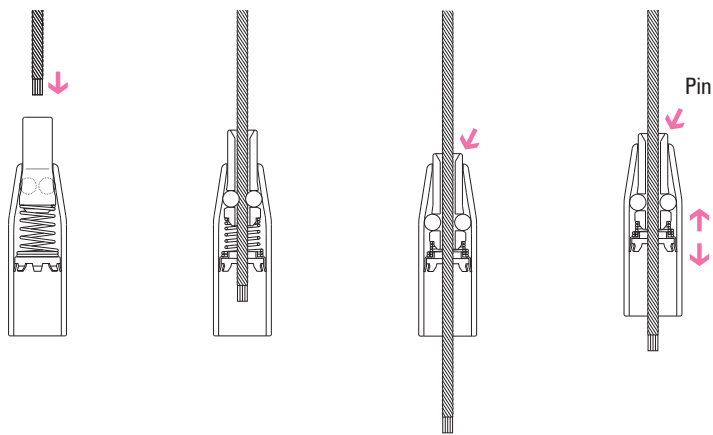


## Highly reliable products

We have roughly 500 products in our catalog, about 300 of which are constantly manufactured at the factory. We produce a wide range of items in small lots in order to meet various needs. Items are assembled with precision by skillful engineers, all of which are then inspected to satisfy our special and strict specifications. ARAKAWA & CO., LTD. is renowned globally for the ARAKAWA GRIP and other highly reliable products that reflect the company's commitment to quality.



what is  
ARAKAWA GRIP?



Insert the cable into grippers. It fastens. Push the pin, can stop anywhere you would like to hold easily.

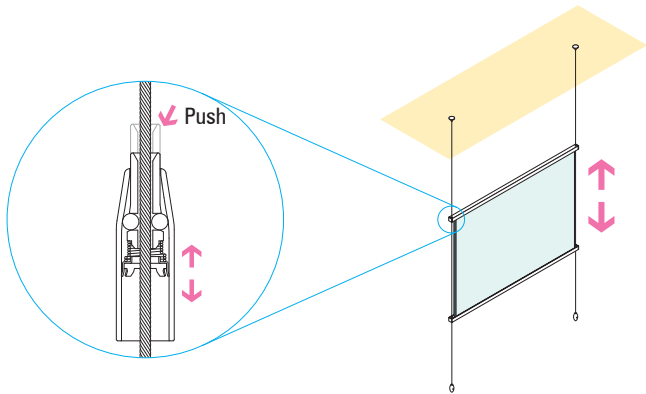
Safe Working Load

Please follow our suggested safe working loads and appropriate cable selection.

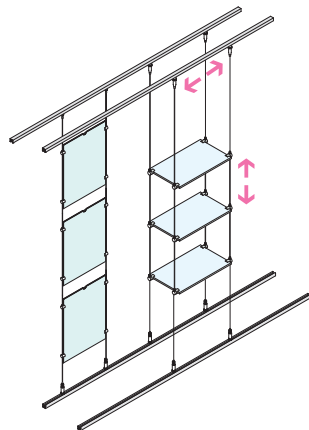
Cable Selection (mm)	φ0.6	φ0.8	φ1.0	φ1.2	φ1.5	φ2.0	φ2.5	φ3.0	φ4.0	φ5.0	φ6.0
Safe Working Load (kg)	3	5	8	10	30	50	70	100	150	200	300

Safe working loads are at least 1/3 of the breaking strength.  
Please contact us if you would like to use our products under dynamic load.

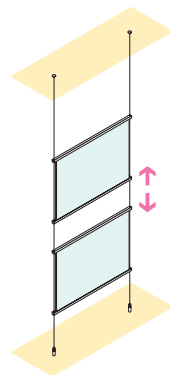
Features



Adjustable along the cable with one push lock without set screw.



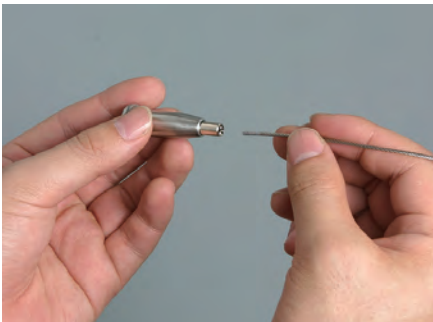
Rail system can be horizontal mobility



Floor tensioner can be fired the cable.

how to use  
ARAKAWA GRIP?

Standard types



Insert the cable through the pin completely into the Grippers (as illustrated to the right). If the cable isn't properly inserted, it may be pulled out.



Press and hold the pin and pull out the cable

Safety cap types



Unscrew the cap.



Insert the cable fully in the pin.



Screw the cap down tightly.

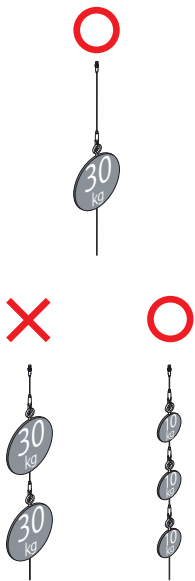


Loosen the cap when you want to move the gripper.

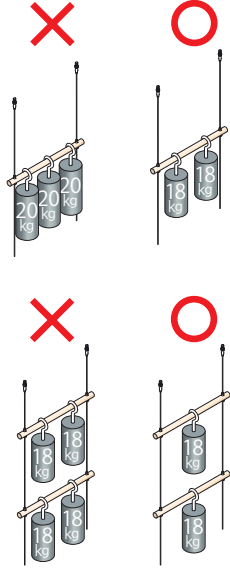


The safe working load  
in case of multiple cables

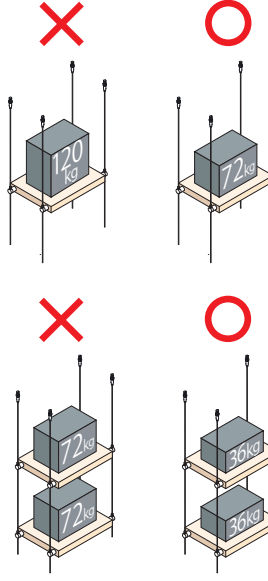
Safe working load by **one point hanging**  
Safe working load of cable diameter × 1 cable × 100%  
(example) 30kg × 1 = 30kg



Safe working load by **two point hanging**  
Safe working load of cable diameter × 2 × 60%  
(example) 30kg × 2 × 0.6 = 36kg



Safe working load by **four point hanging**  
Safe working load of cable diameter × 4 × 60%  
(example) 30kg × 4 × 0.6 = 72kg



Note: In case of 5 point hanging or more, please deal with the same load limit as 4 point hanging.



Safety Instructions

Please read the instructions below carefully before. If you have any questions or concerns about any of this information, please contact us or a local distributor for assistance.

Static Safe Working Load

When choosing cable size, determine the cable's diameter in accordance with the weight of the items. Please refer to the table below to follow the suggested load limits and appropriate cable selection. Also, please make sure to follow the recommended cable diameter and safe working load for each product.

Cable Selection (mm)	φ0.6	φ0.8	φ1.0	φ1.2	φ1.5	φ2.0	φ2.5	φ3.0	φ4.0	φ5.0	φ6.0
Safe Working Load (kg)	3	5	8	10	30	50	70	100	150	200	300
Breaking Strength (kgf)	16.5 16.8	30.2 34.5	47.6 50	56.2 73.4	84.8 95.7	143 146	228 242	310 330	467 543	1,030 1,090	1,750 1,900

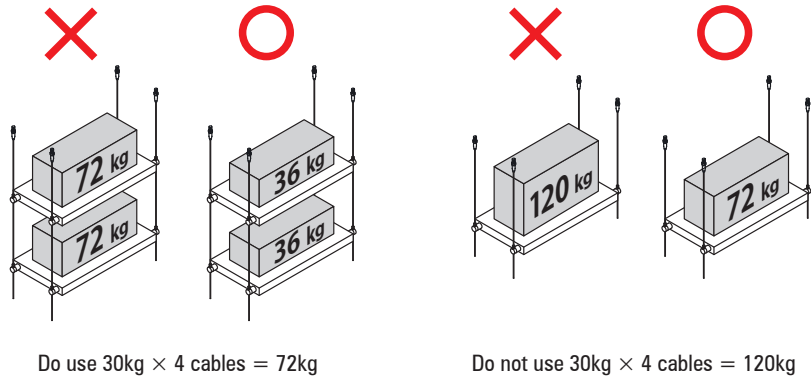
Safe working loads are at least 1/3 of the breaking strength. Please contact us if you would like to use our products under dynamic load.

Caution

- Safe working load and breaking strength are the weights that both the cable and gripper can operate.
- For your safety, please use our company's cable and products in together.
- Safe working loads of some products are different from the safe working load of the cables. When using our products in combination, the lowest safe working loads of the products should be applied.

- The safe working load of φ 5.0 and 6.0 cable only applies to the WF series.
- When multiple items are installed on a single cable, please make sure that the total load of items does not exceed the safe working load.
- Multiple the number of cables by its suggested load (and then by 60% if you have multiple cables) to determine if your weight requirements are met. (see the figure on the right). In case of 5 point hanging or more, please follow the same load limit of 4 point hanging.
- When multiple the number of cables are used, please make sure that safe working load is equally applied to each cable not to concentrate on the load one cable

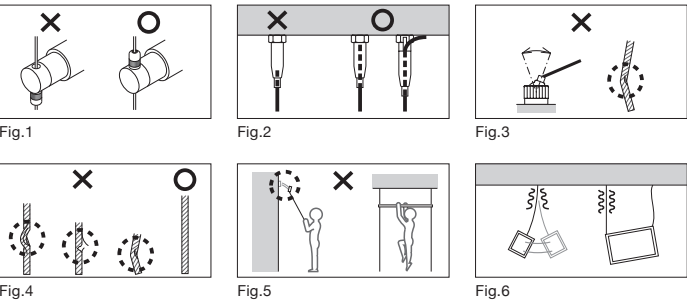
Safe working load of cable diameter × number of cables × 60% =The safe working load



Attention

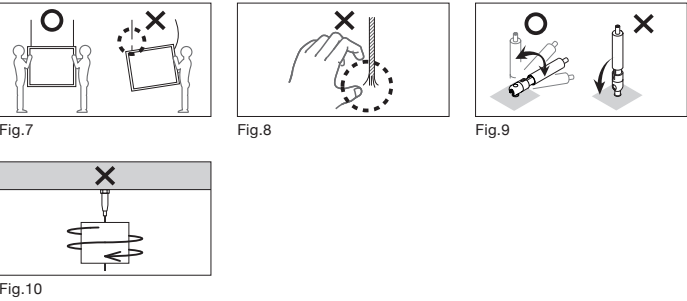
Warning

- Do install grippers or rails into structural framework, or use anchors as appropriate.
- Make sure the gripper is correctly aligned. Ceiling-mounted grippers should have the pin facing down, but all others will have the pin facing up. (Fig.1)
- Make sure to insert cable into the gripper completely before using it. (Fig.2)
- Please do not use cables thinner than the cable diameter that is compatible.
- Do not disassemble or modify our products.
- When using a universal type, do not use it by tilting it more than the allowable angle. Our products may be impossible to grip the cable and may fall. Also, the cable may be broken and impossible to use. (Fig.3)
- Make sure to check on the cable that there is something wrong such as broken or cutting (Fig. 4).
- Do not pull our products strongly. Ceiling equipments or items may fall. (Fig.5)And please note that children do not play with it.
- Do not use our products for applications such as riding or hanging that may threaten human lives. (Fig.5)
- Please select and use the product with allowance for safe working load. Due to shaking and uneven loading, unexpected load may be applied to each cable. (Fig. 6)
- Do not use our products after using overload. The parts may be damaged and it is not possible to obtain sufficient strength.



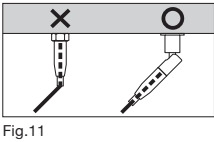
Caution

- Please install items in pairs at least to avoid any accidents.(Fig.7)
- Do not use other companys' cable products. It may cause rust and strength reduction.
- Please make sure that the cable do not contact with hanging items, walls and other materials. The cable may be scratched, which may cause strength reduction.
- Please increase cable diameters to make allowance for installing items in high traffic areas where people contact the items because the excessive tension may be applied and the safe working load may be exceed.
- When hanging items in midair, please make allowance for installing it, which may damage the items, walls and others in case the items shake.
- Be careful not to get injured when handling the frayed cable. And please replace cables or cut the end of the cable because the frayed cable cannot be inserted into our products. (Fig. 8)
- Cable ends must be neat and clean to avoid fraying, and allow glue to dry completely before installing the cable into the hardware.
- When using our products, positioning the cable vertically down from the rail will be optimal. Positioning the cable in a different way, such as diagonally, will lower the safe working load.
- Do not use our universal type products in the wrong direction which do not rotate. (Fig.9)
- Please operate floor attachments ( AM-23, BS-23, SF-23, MF-23 etc.) by hands. The excessive tension may cause the attachments break.
- Do not use our products under the condition that twisting force is always applied to the cable, such as rotating the hanging items. The cable may be pull out the grippers.(Fig.10)



Note

- Please make sure that cables and grippers must be a straight line. (Fig.11)
- Do not apply excessive load on the cable intentionally when the cable is tensioned.
- Do not pull the cable strongly with bare hands, or you will get injured.
- Do not use our products outdoors or in environments with excessive moisture or chemicals.
- Do not use our products as a structure.
- Please make sure to screw the safety caps of grippers completely.
- When attaching products to shelves, pipes, etc., the tension of the cable may be loose due to elongation by the weight. In that case, please tighten the cable again with the floor attachment.
- New grippers may not move smoothly due to factors such as cable clogs and dust clogging inside the grippers under installing. Also, dust may accumulate inside after long time use of grippers. In these case, please replace the new gripper.
- Before using our products, be sure to check the specifications and confirm whether it applies to the purpose of use.

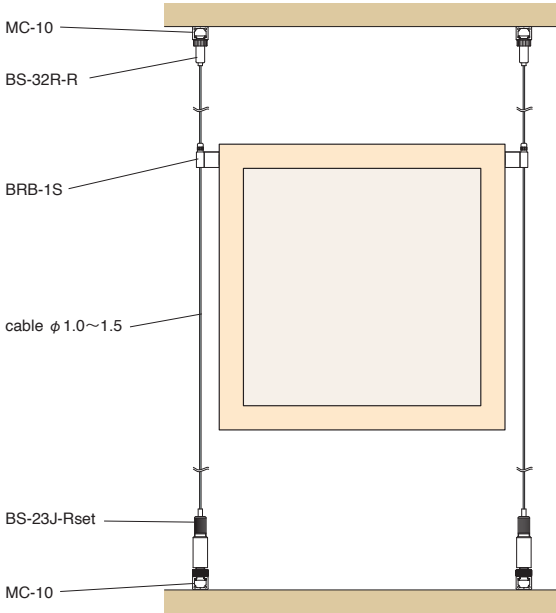




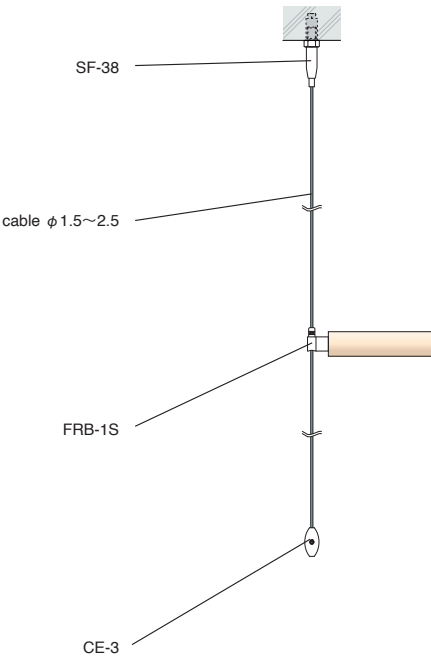
Applications



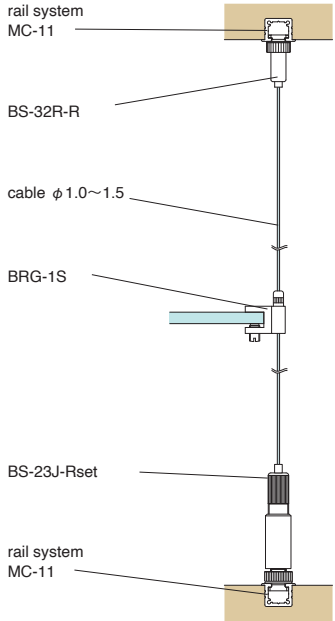
Shop display - wooden box      8kg ~ 30kg  
φ 1.0 ~ φ 1.5



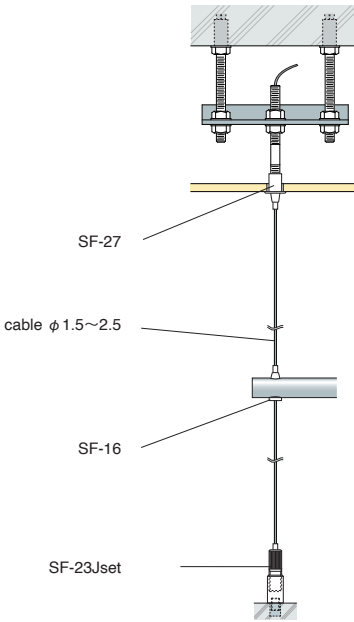
Shop display - pipe hanging      30kg ~ 70kg  
φ 1.5 ~ φ 2.5



Shop display - glass shelving      8kg ~ 30kg  
φ 1.0 ~ φ 1.5



Shop display - pipe hanging      30kg ~ 70kg  
φ 1.5 ~ φ 2.5

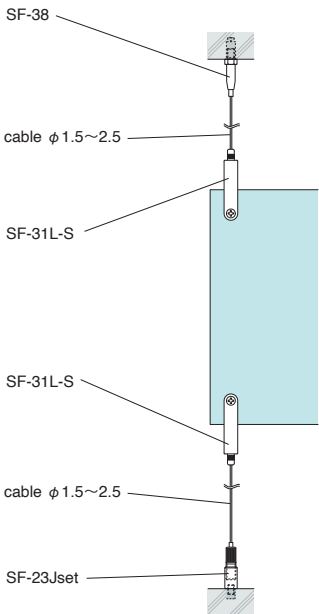






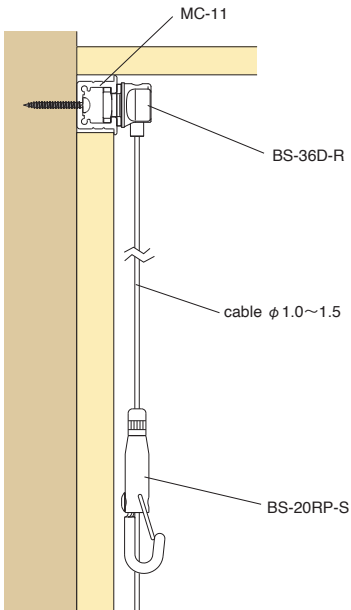
Sign and panel hanging

30kg ~ 70kg  
φ 1.5 ~ φ 2.5



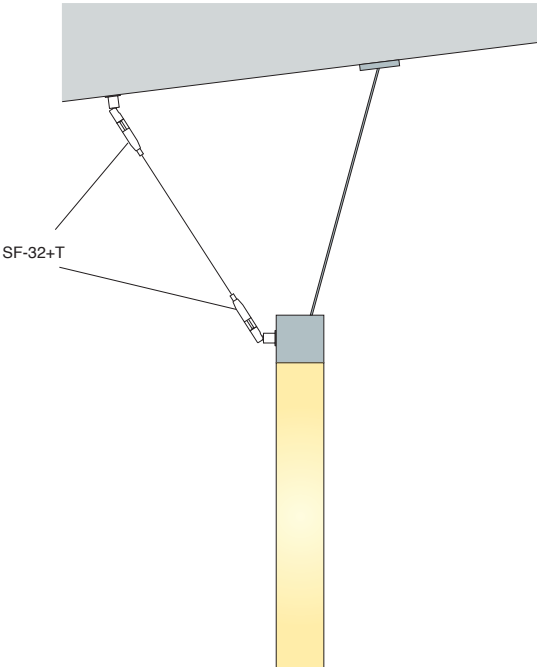
Picture hanging

8kg ~ 30kg  
φ 1.0 ~ φ 1.5



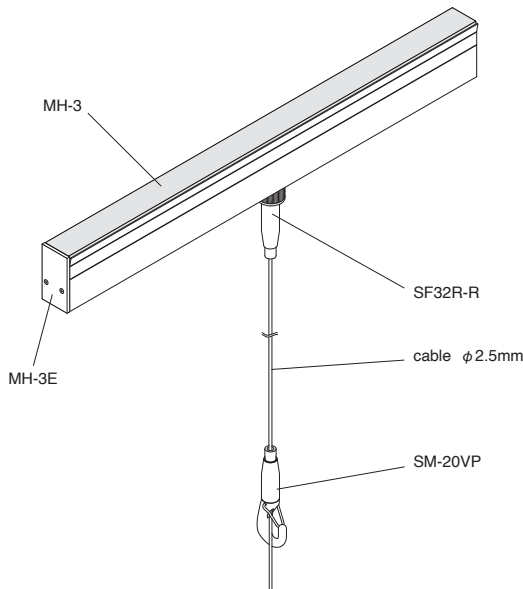
Lighting

30kg ~ 70kg  
φ 1.5 ~ φ 2.5



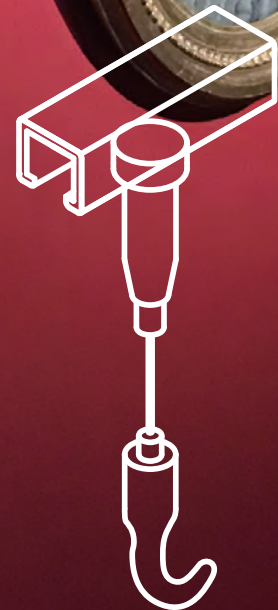
Picture hanging

30kg ~ 70kg  
φ 1.5 ~ φ 2.5





# picture hanging systems

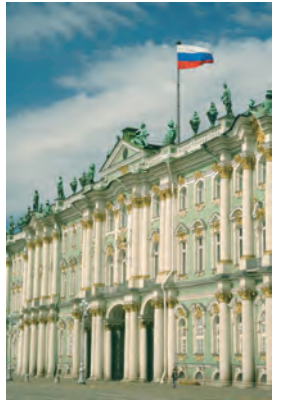


Primorye State Art Gallery, Vladivostok Russia

ARAKAWA GRIP is used at numerous renowned museums.  
Major Japanese museum use ARAKAWA GRIP to hang their art.  
Nemorous renowned museum also use ARAKAWA GRIP in  
Asia, North America and Europe.

## Europe

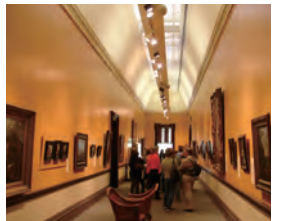
National Gallery London, UK  
Sotheby's London, UK  
Musee Fabre Montpellier, France  
Gallerie dell' Accademia Venice, Italy  
Parma Museum Parma, Italy  
Galleria Borghese Rome, Italy  
Museo del Prado Madrid, Spain  
Tretyakov Gallery Moscow, Russia  
Hermitage St.Petersburg, Russia  
Russia Musum St.Petersburg, Russia  
Pushkin State Museum of Fine Arts Moscow, Russia



Hermitage  
St.Petersburg, Russia

## Asia / Japan

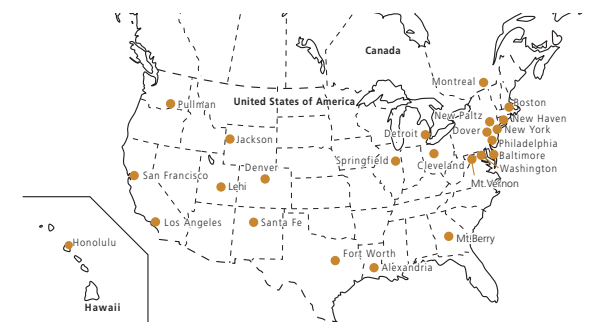
The Palace Museum Beijing, China  
Shanghai Museum Shanghai, China  
The Nanjing Museum Nanjing, China  
National Palace Museum Taipei, Taiwan  
The National Museum of Western Art Tokyo, Japan  
Tokyo National Museum Tokyo, Japan  
Kyoto National Museum Kyoto, Japan  
The National Museum of Modern Art Tokyo & Kyoto  
\*most other Museums in Japan.



## North America

Asian Art Museum San Francisco, CA  
Fine Arts Museum San Francisco, CA  
J.Paul Getty Museum Los Angeles, CA  
The Los Angeles County Museum of Art Los Angeles, CA  
Denver Art Museum Denver, CO  
Yale University Art Gallery New Haven, CT  
National Gallery Washington, DC  
Renwick Gallery Washington, DC  
Smithsonian American Art Museum Washington, DC  
Biggs Museum of American Art Dover, DE  
Oak Hill & Martha Berry Museum Mt.Berry, GA  
Bishop Museum Honolulu, HI  
Abraham Lincoln Presidential Library Springfield, IL  
Arma-Bontemps African Art Museum Alexandria, LA  
Museum of Fine Arts Boston, MA  
The Detroit Institute of Art Detroit, MI  
Poeh Cultural Center & Museum Santa Fe, NM  
Cooper-Hewitt Design Museum New York, NY  
Daresh Museum New York, NY  
Samuel Dorsky Museum of Art New Paltz, NY  
The Metropolitan Museum of Art New York, NY  
The Cleveland Museum of Art Cleveland, OH  
Philadelphia Museum of Art Philadelphia, PA  
Amon Carter Museum Fort Worth, TX  
Kimbell Museum Fort Worth, TX  
Modern Art Museum Fort Worth, TX  
North American Museum of Ancient Life Lehi, UT

Mt.Vernon Museum Mt.Vernon, VA  
Washington State University Museum of Art  
Pullman, WA  
National Museum of Wildlife Art Jackson, WY  
Montreal Museum of Fine Arts Montreal, Quebec



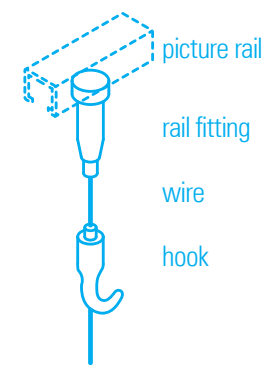
The Metropolitan Museum of Art  
New York, NY



National Gallery  
Washington, DC



ITEM MAP



picture rail for picture hanging

wall-mounted

150kg



VH-4  
φ 1.5 - φ 4.0 p.16

VH-4 rail fitting



VJ-HD cableset  
φ 3.0 - φ 4.0 p.17



HJ-HD cableset  
φ 1.5 - φ 2.5 p.17

100kg



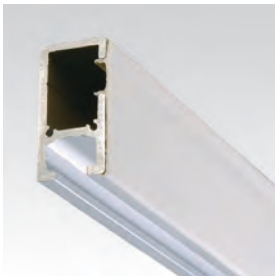
MR-3  
φ 1.5 - φ 3.0 p.18

MR-3 rail fitting



MRD-32  
φ 1.5 - φ 3.0 p.18

70kg



MH-3  
φ 1.0 - φ 2.5 p.20

MH rail fitting

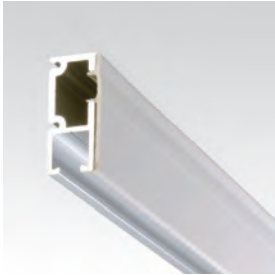


SF-32R-R  
φ 1.5 - φ 2.5 p.20



BS-32R-R  
φ 1.0 - φ 1.5 p.36

30kg



CRJ  
φ 1.0 - φ 1.5 p.22

CRJ rail fitting



CR-1  
φ 1.0 - φ 1.5 p.22

10kg



CRE  
φ 1.0 - φ 1.2 p.23

CRE rail fitting



CF-1 white  
φ 1.0 - φ 1.2 p.23

wire



silver / white / black p.25

make a loop with wire



RB-30  
φ 2.0 - φ 3.0 p.24



RB-15  
φ 1.0 - φ 1.5 p.24

hook



VF-20S  
φ 4.0 p.26



SM-20VP(S)  
φ 2.5 - φ 3.0 p.26



SF-20RP(S)  
φ 1.5 - φ 2.0 p.26



BS-20RP(S)  
φ 1.0 - φ 1.5 p.26



AF-3P SUS  
φ 1.0 - φ 1.5 p.26

security hook



SM-20VKP-S  
φ 2.5 - φ 3.0 p.27



KH-2S  
φ 1.5 - φ 2.0 p.27



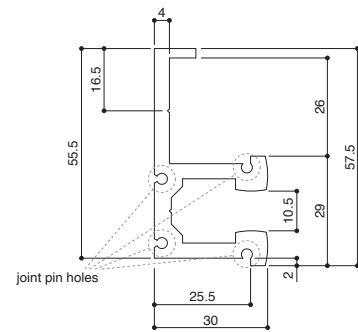
KH-1S  
φ 1.0 - φ 1.5 p.27

150kg/m

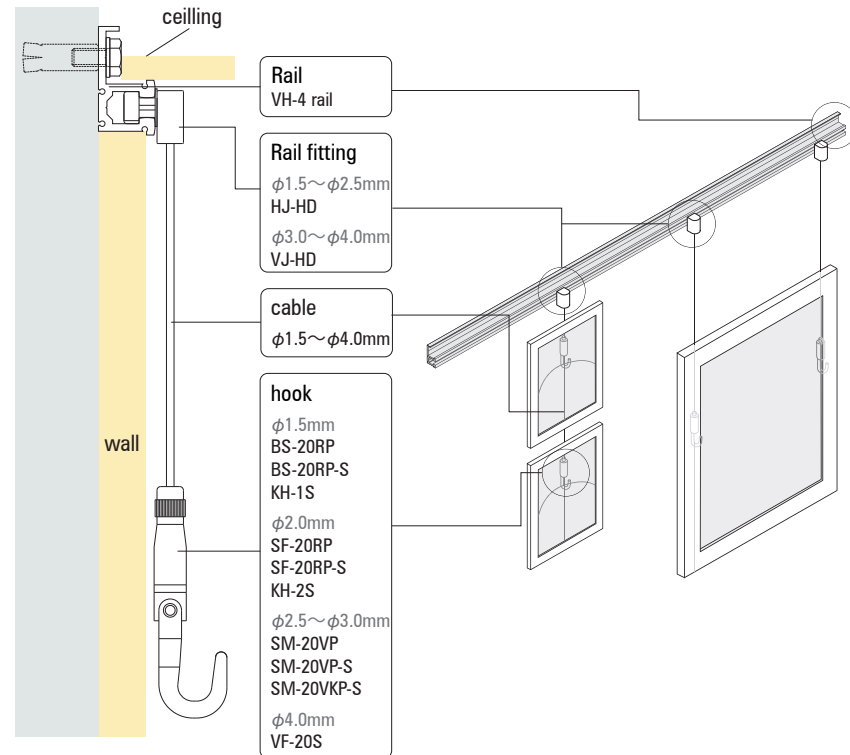
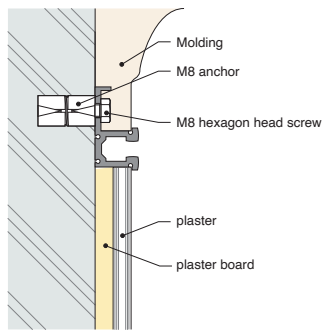
Description

length: 2,000mm

anchor placement: within 300mm



### Concrete Slab Wall



VH-4E CODE:127321

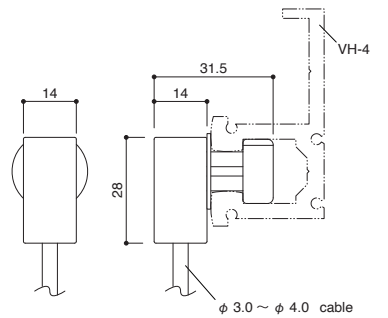
Technical drawing of a shaft. The shaft is represented by two parallel horizontal lines. Above the shaft, a dimension line with arrows at both ends is labeled '100'. To the right of the shaft, a vertical dimension line with arrows at both ends is labeled '2.8'.

**J1-01** CODE:200080

$\phi 3.0 : 100\text{kg}$     $\phi 4.0 : 150\text{kg}$

Description

VJ-HD includes ball-stopped cable



	L = 1,000mm	L = 2,000mm	L = 3,000mm
φ 3.0	VJ-HD 3010 CODE:60143010	VJ-HD 3020 CODE:60143020	VJ-HD 3030 CODE:60143030
φ 4.0	VJ-HD 4010 CODE:60144010	VJ-HD 4020 CODE:60144020	VJ-HD 4030 CODE:60144030

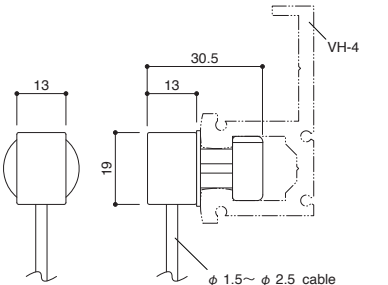


φ 1.5 : **30**kg   φ 2.0 : **50**kg   φ 2.5 : **70**kg

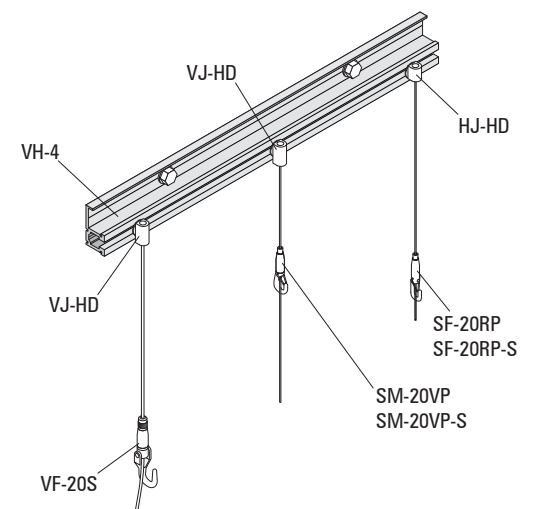
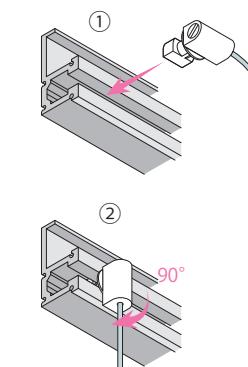
Description

cable length(1m, 2m, 3m and 5m) and cable size (  $\phi$ 1.5mm,  $\phi$ 2.0mm,  $\phi$ 2.5mm) must be selected when you purchase.

HJ-HD includes ball-stopped cable



HJ-HD cableset CODE:60140306



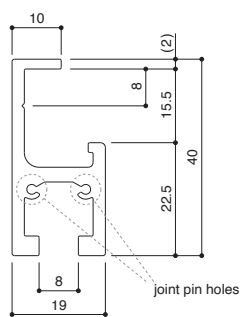




MR-3

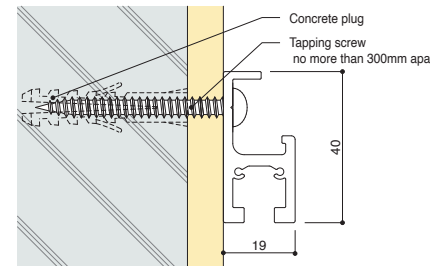
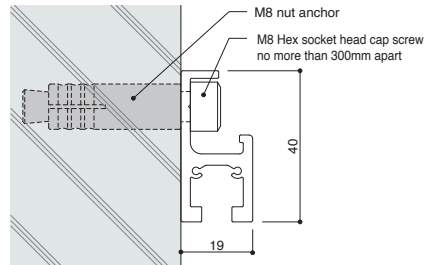
100kg/m

Type: wall-mounted  
Function: rail system  
Material: aluminum  
Finish: anodized aluminum  
Description  
length: 2,000mm  
anchor placement: within 300mm



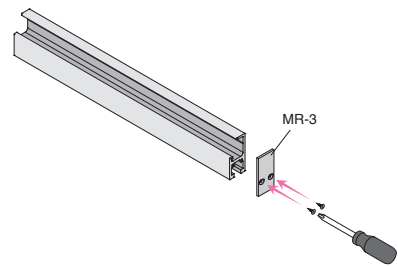
MR-3 2000 silver CODE:128031

Concrete Slab Wall

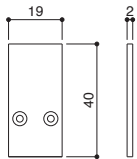


MR-3E

Function: end cap  
Material: aluminum

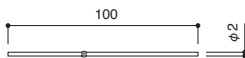


MR-3E CODE:128039



J1-03

Function: joint pin  
Material: steel



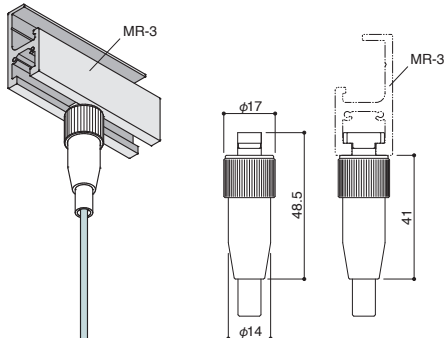
J1-03 CODE:120205



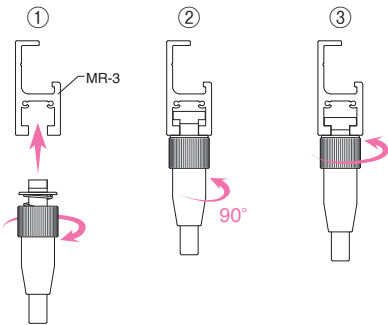
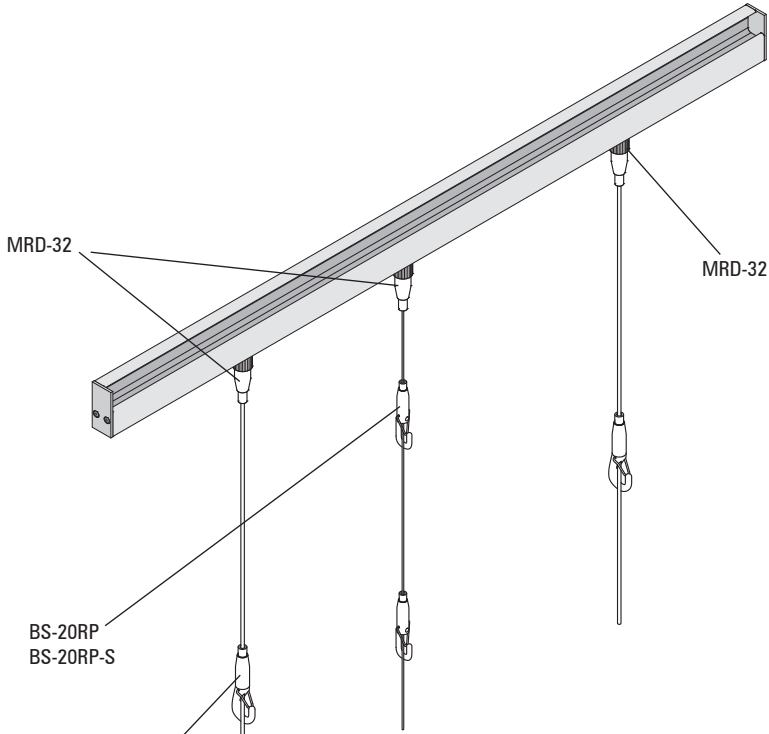
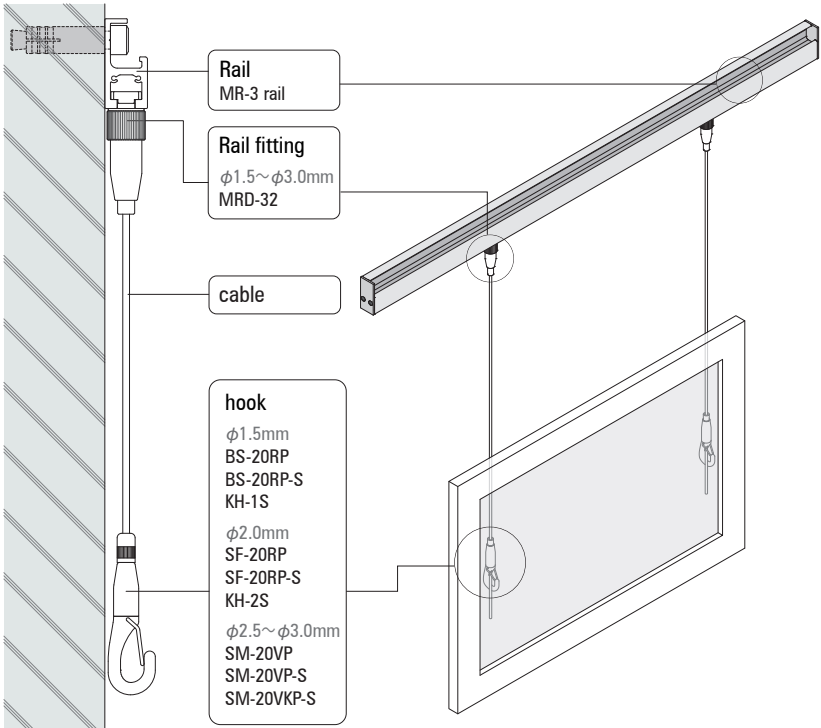
MRD-32

φ 1.5 : 30kg φ 2.0 : 50kg φ 2.5 : 70kg φ 3.0 : 100kg

Type: MR-3 rail fitting  
Function: ceiling  
Material: stainless ,brass  
Finish: satin, matte nickel plating



MRD-32 CODE:128632





MH-3

70kg/m

Type: wall-mounted

Function: rail system

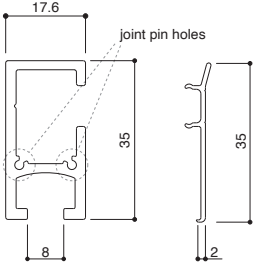
Material: aluminum

Finish: anodized aluminum (cover: white)

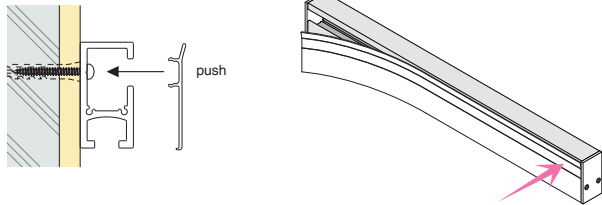
Description

anchor placement: within 300mm

length: 2,000mm

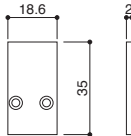
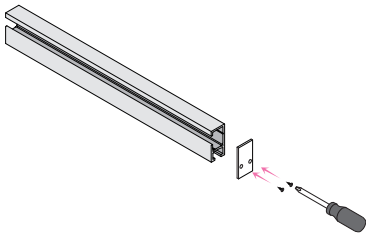


MH-3 2000 white CODE:125212



MH-3E white

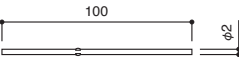
Function: end cap  
Material: aluminum



MH-3E white CODE:125303

J1-03

Function: joint pin  
Material: steel



J1-03 CODE:120205



SF-32R-R

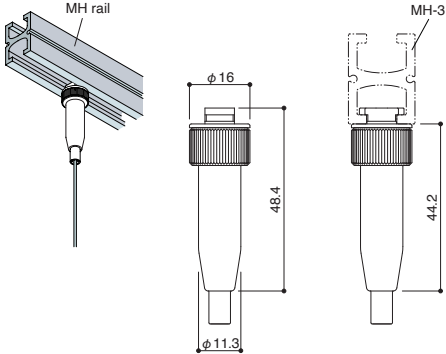
φ 1.5 : 30kg φ 2.0 : 50kg φ 2.5 : 70kg

Type: MH rail fitting

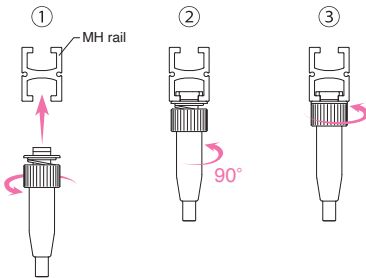
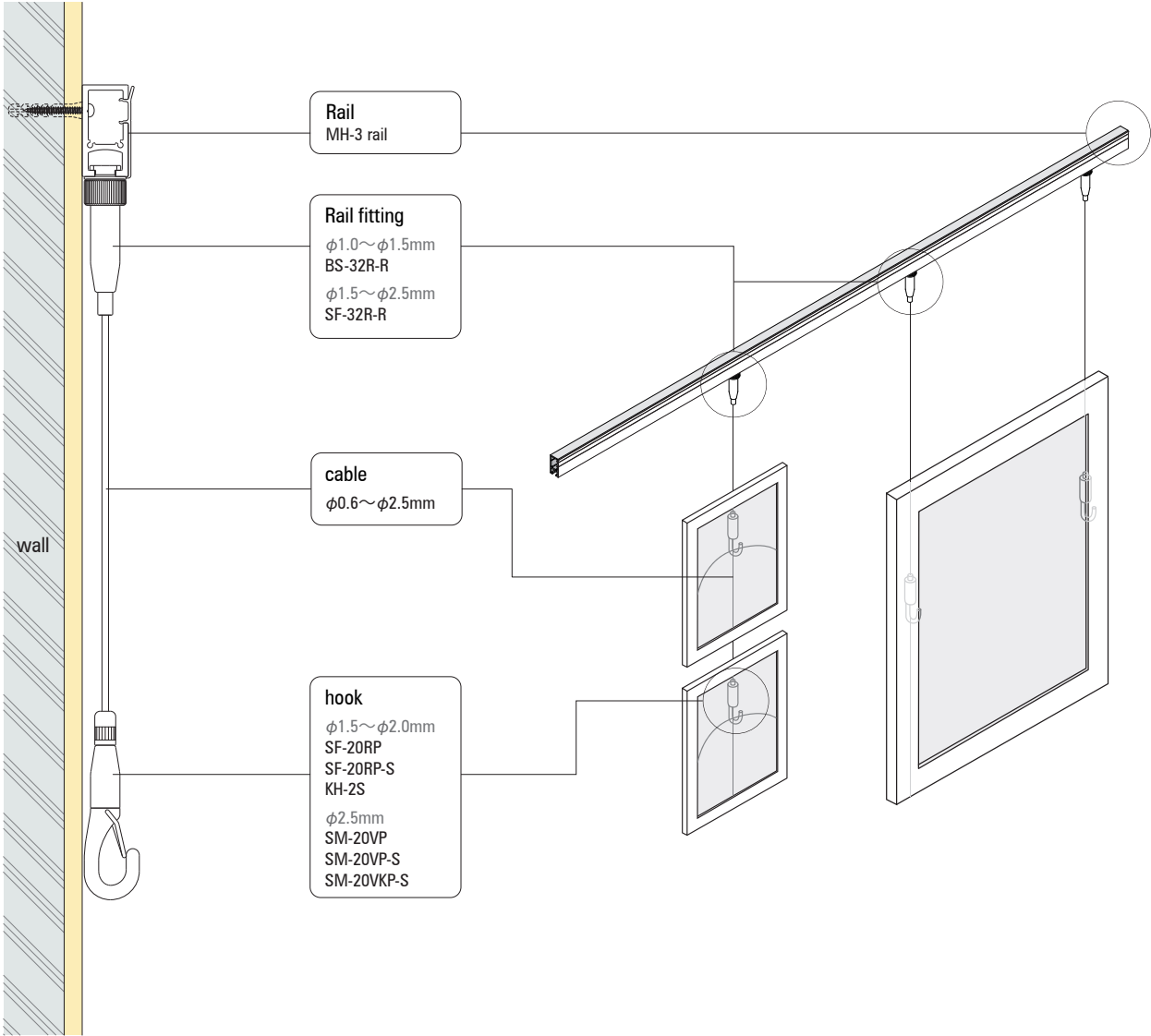
Function: ceiling

Material: stainless, brass

Finish: satin, matte nickel plating



SF-32R-R CODE:270301





picture rail / wall-mounted, rail fitting



CRJ

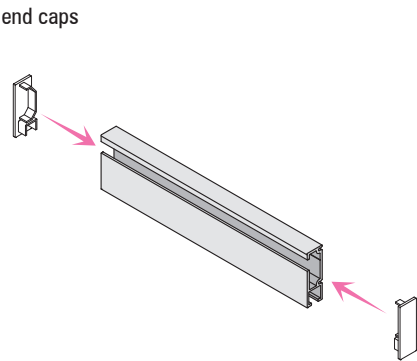
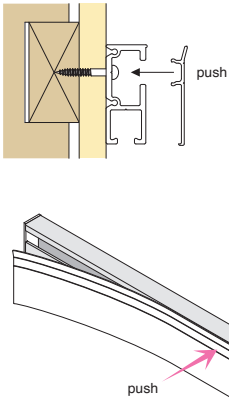
30kg/m

Type: **wall-mounted**  
Function: **rail system**  
Material: **aluminum (cover: plastic)**  
Finish: **anodized aluminum (cover: white)**

Description

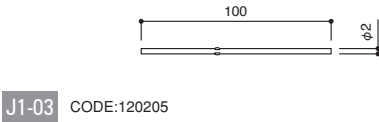
CRJ includes end caps.  
anchor placement: within 300mm  
length: 2,000mm

CRJ 2000 white CODE:121101



J1-03

Function: **joint pin**  
Material: **steel**



CR-1

φ 1.0 : 8kg   φ 1.2 : 10kg   φ 1.5 : 30kg

Type: **CRJ rail fitting**  
Function: **ceiling**  
Material: **brass**  
Finish: **nickel plating**

① ②

CRJ

35.5

φ9

90°

CR-1 CODE:121201

picture rail / wall-mounted, rail fitting



CRE

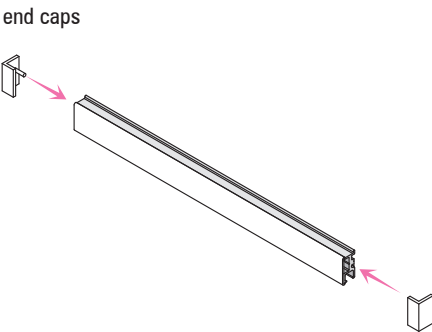
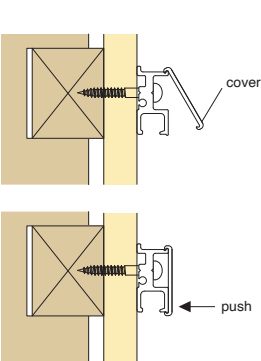
10kg/m

Type: **wall-mounted**  
Function: **rail system**  
Material: **aluminum (cover: plastic)**  
Finish: **anodized aluminum (cover: white)**

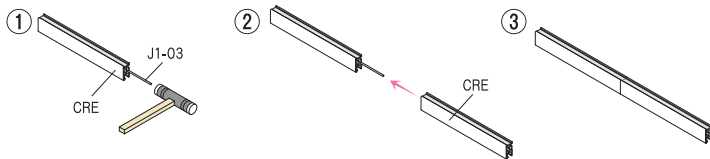
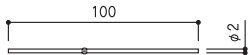
Description

CRE includes one joint pin(J1-03) and end caps.  
length: 1,820mm

CRE 1800 white CODE:120113



Joint Pin (J1-03)



CF-1

φ 1.0 : 8kg   φ 1.2 : 10kg

Type: **CRE rail fitting**  
Function: **ceiling**  
Material: **zinc die-casting**  
Finish: **white painted**

①

10

23

10

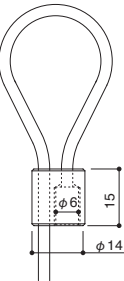
CF-1 white CODE:120211



RB-30  $\phi$  2.0 : 50kg  $\phi$  2.5 : 70kg  $\phi$  3.0 : 100kg

Type: make a loop with wire  
Function: ceiling  
Material: stainless

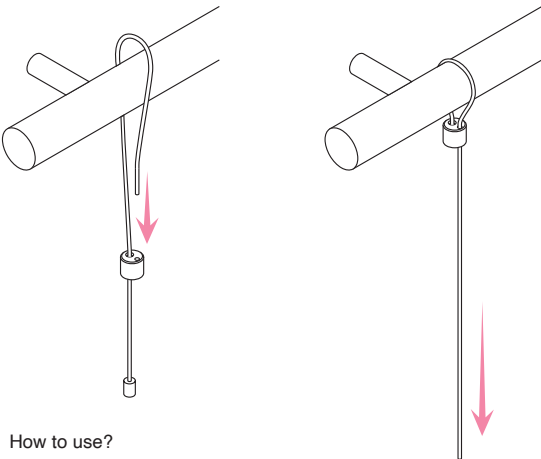
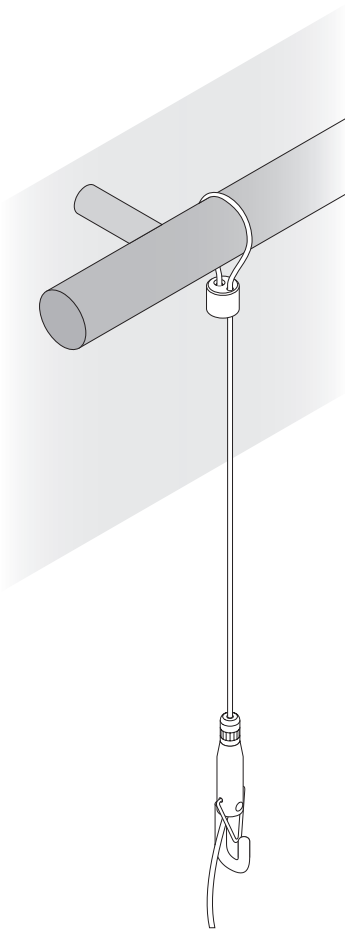
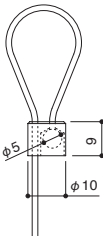
L=1,000mm			L=2,000mm			L=3,000mm		
$\phi$ 2.0	RB-30 2010	CODE:90612010	RB-30 2020	CODE:90612020		RB-30 2030	CODE:90612030	
$\phi$ 2.5	RB-30 2510	CODE:90612510	RB-30 2520	CODE:90612520		RB-30 2530	CODE:90612530	
$\phi$ 3.0	RB-30 3010	CODE:90613010	RB-30 3020	CODE:90613020		RB-30 3030	CODE:90613030	



RB-15  $\phi$  1.0 : 8kg  $\phi$  1.5 : 30kg

Type: make a loop with wire  
Function: ceiling  
Material: stainless

L=1,000mm			L=2,000mm			L=3,000mm		
$\phi$ 1.0	RB-15 1010	CODE:90601010	RB-15 1020	CODE:90601020		RB-15 1030	CODE:90601030	
$\phi$ 1.5	RB-15 1510	CODE:90601510	RB-15 1520	CODE:90601520		RB-15 1530	CODE:90601530	



How to use?

1. Insert soldered end wire into a largest hole of the hardware
2. Turn the wire over and around a pipe etc.
3. Insert the wire into another hole to make a loop.

Instruction video

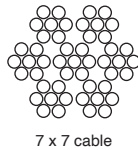


Stainless Steel Cable

Function: wire cable  
Material: stainless

Description

- Our products should only be used with 7×7 aircraft cable.
- We provide cable with soldered ends basically. We can also provide cable with loop and ball stop. Please contact to us if you like detailed information.
- If cutting cable on your own, use appropriate cable cutters and solder the cable. Cable ends must be neat and clean to avoid fraying, and allow glue to dry completely before installing the cable into the gripper.



7 x 7 cable

LINE UP CODE

item	color	cable diameter	1m	2m	3m	5m	10m	50m	100m
Cable soldered end	silver	$\phi$ 0.6	90010610	90010620	90010630	90010650	90010691	—	90010690
		$\phi$ 0.8	90010810	90010820	90010830	90010850	90010891	—	90010890
		$\phi$ 1.0	90011010	90011020	90011030	90011050	90011091	90011095	90011090
		$\phi$ 1.2	90011210	90011220	90011230	90011250	90011291	—	90011290
		$\phi$ 1.5	90011510	90011520	90011530	90011550	90011591	90011595	90011590
		$\phi$ 2.0	90012010	90012020	90012030	90012050	90012091	90012095	—
		$\phi$ 2.5	90012510	90012520	90012530	90012550	90012591	90012595	—
		$\phi$ 3.0	90013010	90013020	90013030	90013050	90013091	90013095	—
	white	$\phi$ 5.0	Please contact us if you like detailed information				—	—	—
		$\phi$ 6.0					—	—	—
		$\phi$ 1.2	90231210	90231220	90231230	90231250	90231291	—	90231290
		$\phi$ 1.5	90251510	90251520	90251530	90251550	90251591	—	90251590
	black	$\phi$ 1.2	90241210	90241220	90241230	90241250	90241291	—	90241290
		$\phi$ 1.5	90261510	90261520	90261530	90261550	90261591	—	90261590

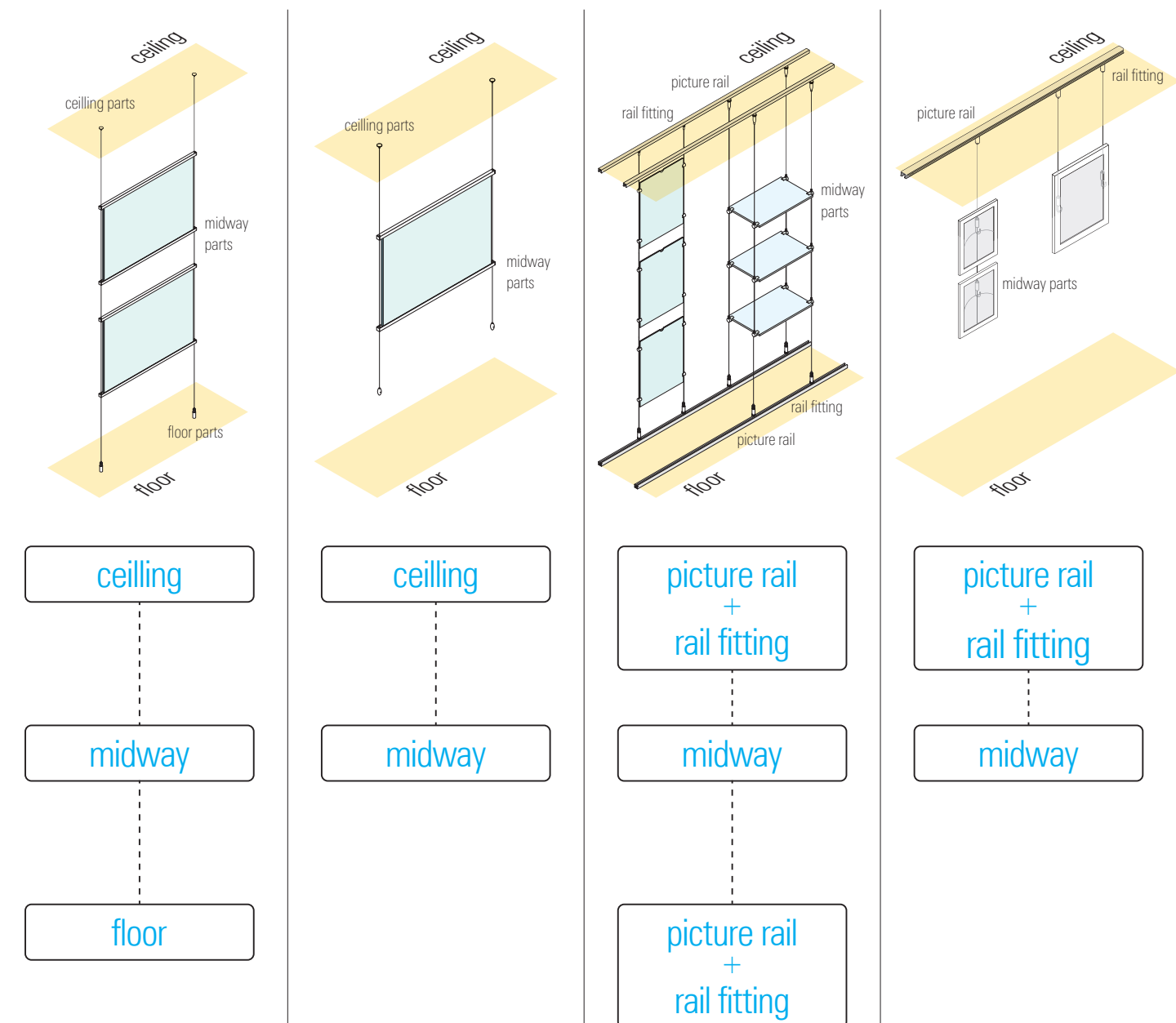




# wire hanging systems



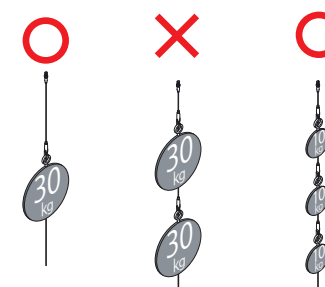
## Applications



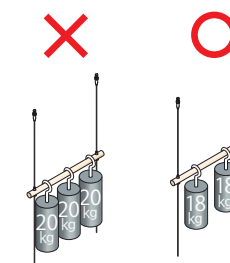
## The safe working load in case of multiple cables

Safe working load of cable diameter  $\times$  number of cables  $\times 0.6$

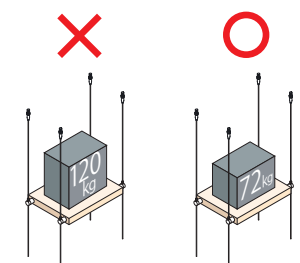
Safe working load by **one point hanging**  
 Safe working load of cable diameter  $\times 1 \text{ cable} \times 100\%$   
 (example)  $30\text{kg} \times 1 = 30\text{kg}$



Safe working load by **two point hanging**  
 Safe working load of cable diameter  $\times 2 \times 60\%$   
 (example)  $30\text{kg} \times 2 \times 0.6 = 36\text{kg}$



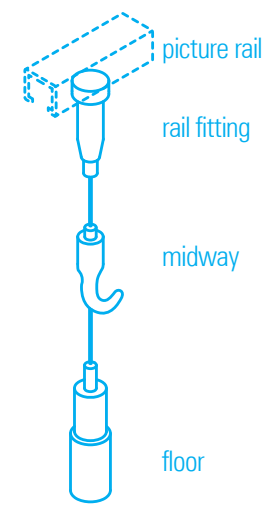
Safe working load by **four point hanging**  
 Safe working load of cable diameter  $\times 4 \times 60\%$   
 (example)  $30\text{kg} \times 4 \times 0.6 = 72\text{kg}$



Note: In case of 5 point hanging or more, please deal with the same load limit as 4 point hanging.



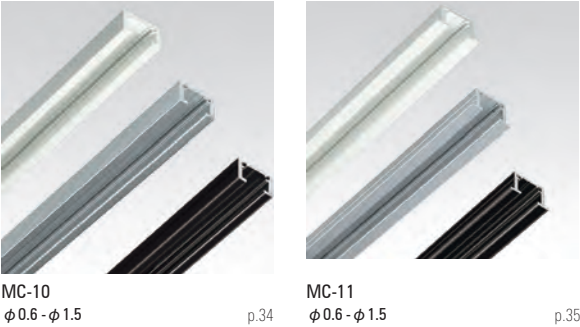
ITEM MAP



picture rail for display and picture hanging

30kg  
MC rails

ceiling-, wall-, floor-mounted



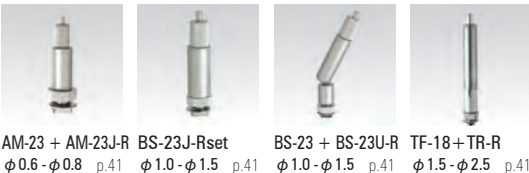
MC railing fitting - ceiling



MC railing fitting - wall



MC railing fitting - floor tensioner



70kg  
MH rails

ceiling-mounted



wall-mounted

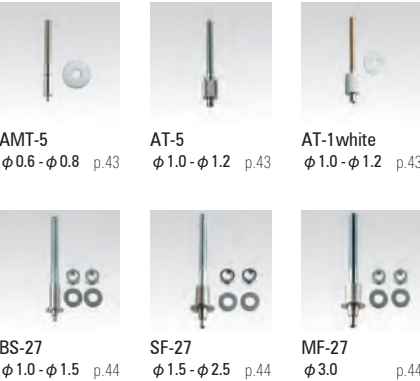


MH railing fitting



ceiling - point

recessed



nut anchor



bolt anchor, universal



make a loop



make a loop with wire



wire



# midway


## hook




AM-20  
φ 0.6 - φ 0.8 p.51



AF-3  
φ 1.0 - φ 1.2 p.51



AF-3P  
φ 1.0 - φ 1.2 p.51




AF-3 SUS  
φ 1.0 - φ 1.5 p.51



AF-3P SUS  
φ 1.0 - φ 1.5 p.51




BS-20RP(S)  
φ 1.0 - φ 1.5 p.52



SF-20RP(S)  
φ 1.5 - φ 2.0 p.52



SM-20VP(S)  
φ 2.5 - φ 3.0 p.52



VF-20S  
φ 4.0 p.52

## security hook



KH-1S  
φ 1.0 - φ 1.5 p.53



KH-2S  
φ 1.5 - φ 2.0 p.53



SM-20VKP-S  
φ 2.5 - φ 3.0 p.53

## ring



BS-22  
φ 1.0 - φ 1.5 p.54



SF-21  
φ 1.5 - φ 2.5 p.54



MF-21S  
φ 3.0 p.54



WF-21  
φ 3.0 - φ 6.0 p.54

## pipe



BS-16  
φ 1.0 - φ 1.5 p.55



SF-16(S)  
φ 1.5 - φ 2.5 p.55



MF-16S  
φ 3.0 p.55



WF-16  
φ 3.0 - φ 6.0 p.55

## shelving



BRB-1S  
φ 1.0 - φ 1.5 p.56



BRB-2S  
φ 1.0 - φ 1.5 p.56



FRB-1S  
φ 1.5 - φ 2.5 p.56



FRB-2S  
φ 1.5 - φ 2.5 p.56



BS-35(S)  
φ 1.0 - φ 1.5 p.57



SF-35(S)  
φ 1.5 - φ 2.5 p.57



MF-35S  
φ 3.0 p.57



BRL-1S  
φ 1.0 - φ 1.5 p.58



BU-70  
φ 1.0 - φ 1.5 p.58



SU-70  
φ 1.5 - φ 2.5 p.58

## glass / acrylic shelving



BS-35+R  
φ 1.0 - φ 1.5 p.59



SF-35+R  
φ 1.5 - φ 2.5 p.59



MF-35+R-S  
φ 3.0 p.59



BRG-1S  
φ 1.0 - φ 1.5 p.60



BRG-2S  
φ 1.0 - φ 1.5 p.60




FRG-1S  
φ 1.5 - φ 2.5 p.60




FRG-2S  
φ 1.5 - φ 2.5 p.60


## panel




BS-31  
φ 1.0 - φ 1.5 p.67




SF-31S  
φ 1.5 - φ 2.5 p.67




SF-31L-S  
φ 1.5 - φ 2.5 p.67




BSC-1S set  
φ 1.0 - φ 1.2 p.63



BSU-1S  
φ 1.0 - φ 1.5 p.64



BSK-1S  
φ 1.0 - φ 1.5 p.65



SFK-1S, SFK1L-S  
φ 1.5 - φ 2.5 p.66

## panel hanger for acrylic panel



PPH-1R-620 silver  
φ 1.0 - φ 1.5 p.68



PPH-1PR silver  
p.68

## screw



AD-1  
φ 1.0 - φ 1.2 p.70



BS-30B(S)  
φ 1.0 - φ 1.5 p.70




SF-30B(S)  
φ 1.5 - φ 2.5 p.70




MF-30S  
φ 3.0 p.70

## object



AU-72  
φ 0.6 - φ 0.8 p.71



BU-72  
φ 1.0 - φ 1.5 p.71

## mounted



AM-26  
φ 0.6 - φ 0.8 p.72



AK-14  
φ 0.6 - φ 1.2 p.72



B5R6(S)  
φ 1.0 - φ 1.5 p.72



BS-26(S)  
φ 1.0 - φ 1.5 p.72



FK-16S  
φ 1.5 - φ 2.5 p.73



SF-26N-S  
φ 1.5 - φ 2.5 p.73



MK-16S  
φ 3.0 p.73



WF-21B  
φ 3.0 - φ 6.0 p.73

# floor

## anchor



AM-23Jset  
φ 0.6 - φ 0.8 p.75



BS-23Jset  
φ 1.0 - φ 1.5 p.75



SF-23Jset  
φ 1.5 - φ 2.5 p.75




MF-23Jset  
φ 3.0 p.75

## screw




BS-23Jset + 32B  
φ 1.0 - φ 1.5 p.76



BS-23 + BS-23U + 32B  
φ 1.0 - φ 1.5 p.76



SF-23Jset + 32C  
φ 1.5 - φ 2.5 p.76




MF-23Jset + 32C  
φ 3.0 p.76

## mounted




BS-23 + BS-23L  
φ 1.0 - φ 1.5 p.77




SF-23 + SF-23L  
φ 1.5 - φ 2.5 p.77


## TF series




TF-20+T  
φ 1.5 - φ 2.5 p.78



TF-18+T  
φ 1.5 - φ 2.5 p.78



TF-32+T  
φ 1.5 - φ 2.5 p.78



TF-32+T + 32C  
φ 1.5 - φ 2.5 p.78

## hook



SP-1  
φ 1.0 - φ 1.5 p.79



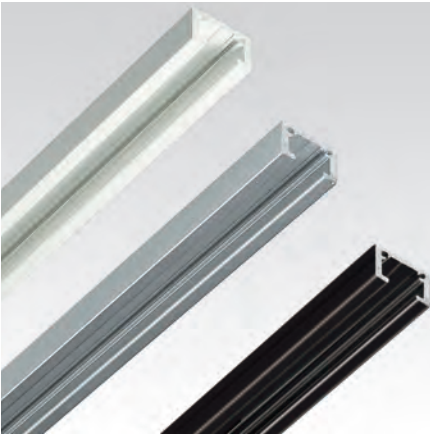
SP-3  
φ 1.0 - φ 1.5 p.79

## wire end



CE-3  
φ 0.6 - φ 2.5 p.79





### MC-10

Type: ceiling-, wall-, floor-mounted  
Function: rail system  
Material: aluminum  
Finish: anodized aluminum (silver, white or black)

Description

anchor placement: within 300mm  
MC-10 is suitable for surface-mounted applications.  
length : 2,000mm

joint pin holes

MC-10 2000 silver	CODE:126101
MC-10 2000 white	CODE:126102
MC-10H 2000 black	CODE:126091

\*H:with holes to screw

### MC-10E

Function: end cap  
Material: plastic

MC-10E

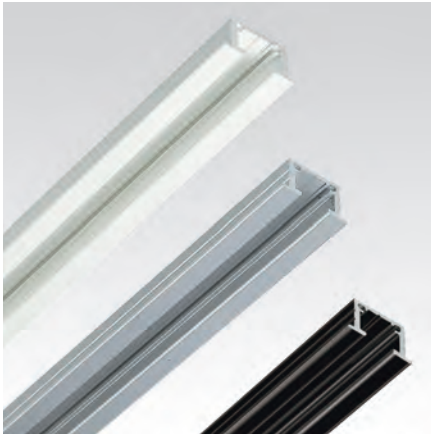
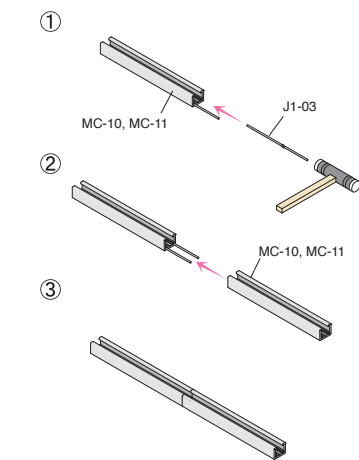
MC-10E silver	CODE:126301
MC-10E white	CODE:126302
MC-10E black	CODE:126300

### J1-03

Function: joint pin  
Material: steel

100  
φ2

J1-03 CODE:120205



### MC-11

Type: ceiling-, wall-, floor-mounted  
Function: rail system  
Material: aluminum  
Finish: anodized aluminum (silver, white or black)

Description

anchor placement: within 300mm  
MC-11 is suitable for flush-mounted applications.  
length : 2,000mm

joint pin holes

MC-11 2000 silver	CODE:126111
MC-11 2000 white	CODE:126112
MC-11 2000 black	CODE:126115

### MC-11E

Function: end cap  
Material: aluminum

MC-11E

MC-11E silver	CODE:126311
MC-11E white	CODE:126312
MC-11E black	CODE:126310

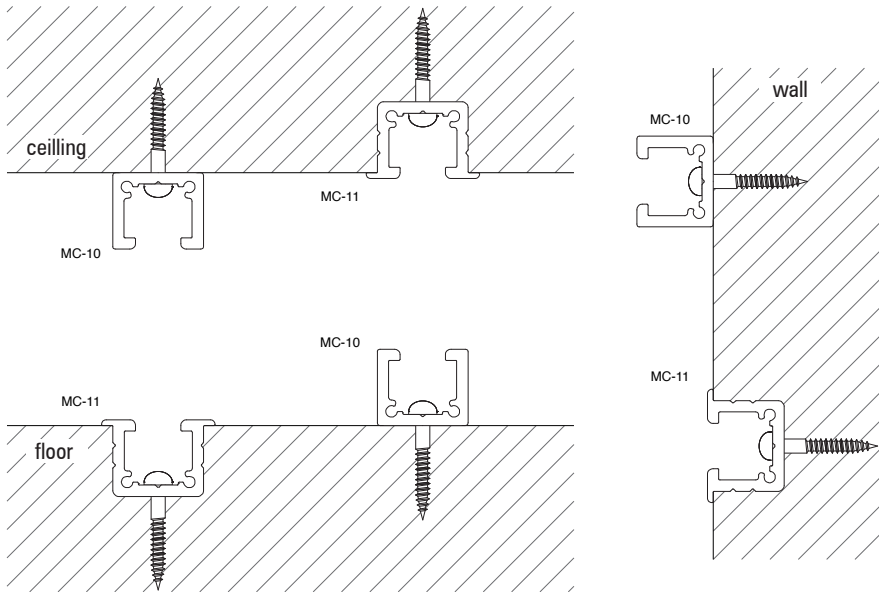
### J1-03

Function: joint pin  
Material: steel

100  
φ2

J1-03 CODE:120205

#### Installation guide

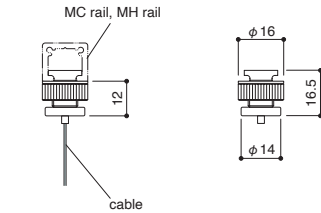


picture rail / MC/MH rail fitting



AM-32R-R  $\phi 0.6 : 3\text{kg}$   $\phi 0.8 : 5\text{kg}$

Type: MC/MH rail fitting  
Function: ceiling  
Material: brass  
Finish: matte nickel plating

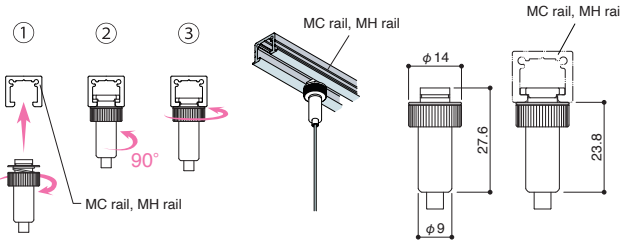


AM-32R-R CODE:270101



BS-32R-R  $\phi 1.0 : 8\text{kg}$   $\phi 1.2 : 10\text{kg}$   $\phi 1.5 : 30\text{kg}$

Type: MC/MH rail fitting  
Function: ceiling  
Material: brass  
Finish: matte nickel plating (silver)  
white painted (white)  
black painted (black)

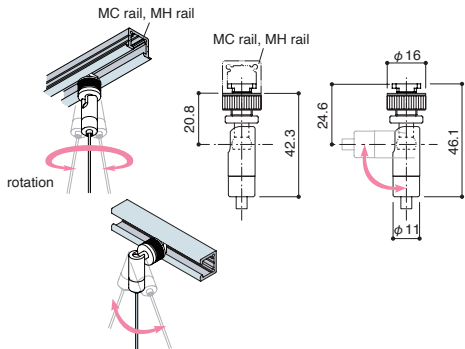


BS-32R-R silver CODE:273201  
BS-32R-R white CODE:273202  
BS-32R-R black CODE:273203



BS-32U-R  $\phi 1.0 : 8\text{kg}$   $\phi 1.2 : 10\text{kg}$   $\phi 1.5 : 30\text{kg}$

Type: MC/MH rail fitting  
Function: ceiling  
Material: brass  
Finish: matte nickel plating

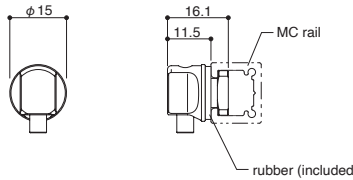


BS-32U-R CODE:270202



BS-36D-R  $\phi 1.0 : 8\text{kg}$   $\phi 1.2 : 10\text{kg}$   $\phi 1.5 : 30\text{kg}$

Type: MC rail fitting  
Function: wall  
Material: brass  
Finish: matte nickel plating



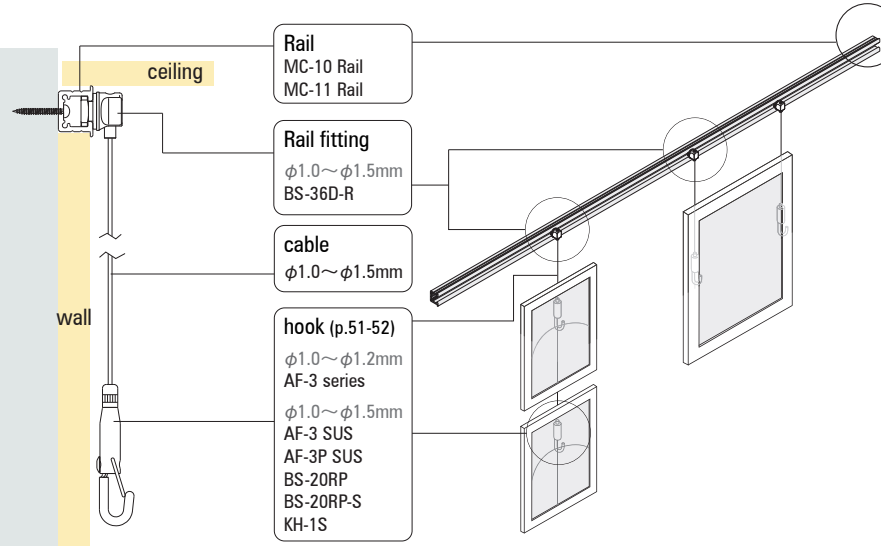
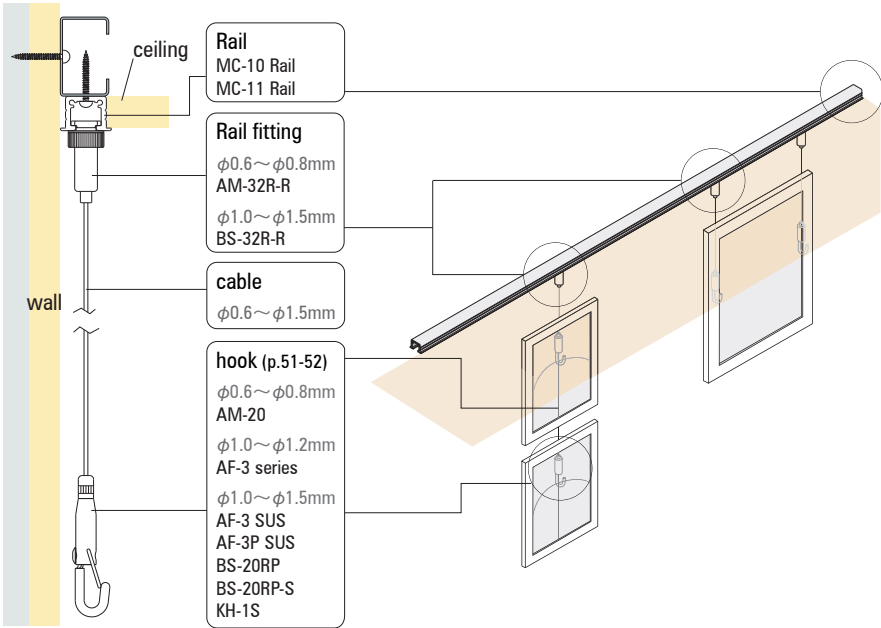
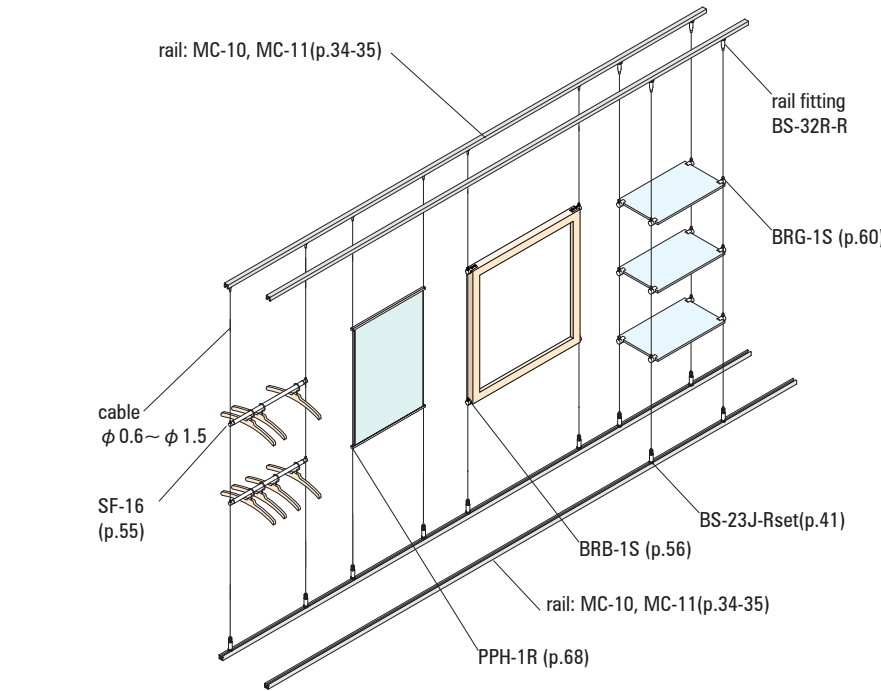
BS-36D-R CODE:270206

Display system applications

Picture hanging - ceiling mount

Picture hanging - wall mount

picture rail / MC applications



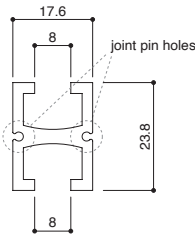




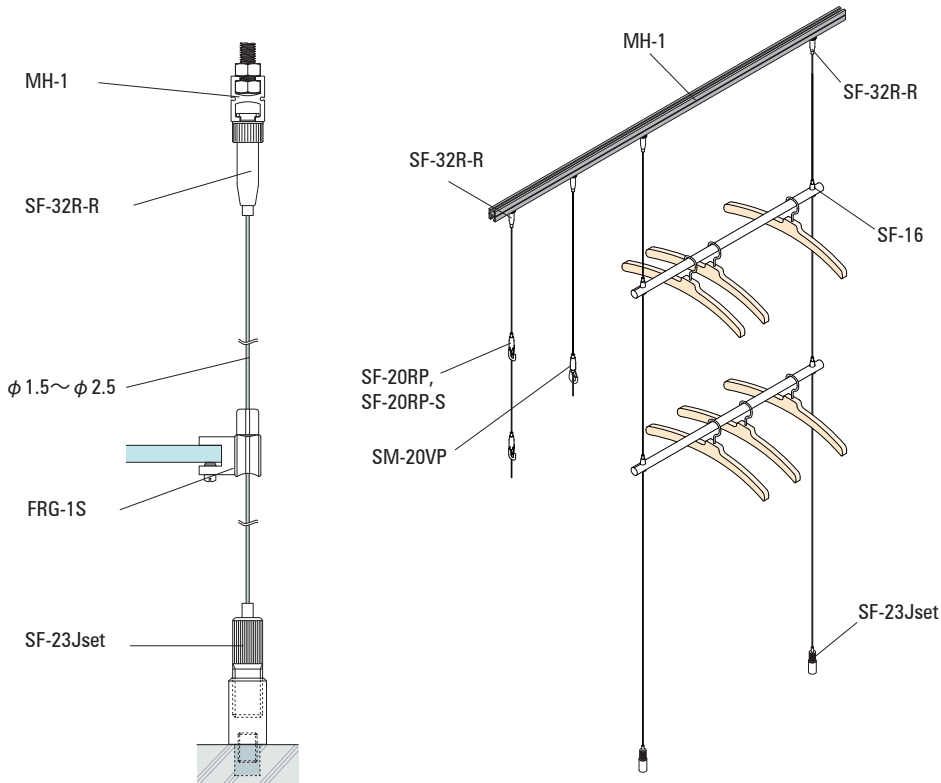
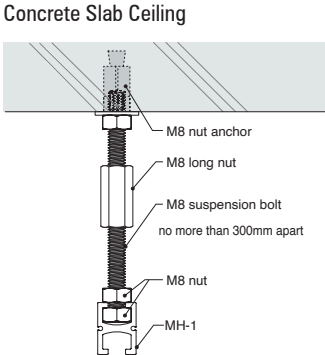
MH-1

70kg/m

Type: ceiling  
Function: rail system  
Material: aluminum  
Finish: anodized aluminum  
Description  
length: 2,000mm  
anchor placement: within 300mm

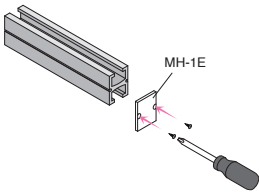
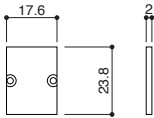


MH-1 2000 silver CODE:125101



MH-1E

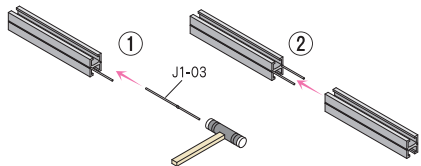
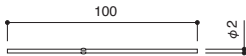
Function: end cap  
Material: aluminum



MC-11E silver CODE:125301

J1-03

Function: joint pin  
Material: steel



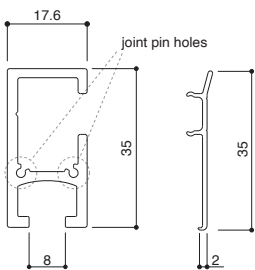
J1-03 CODE:120205



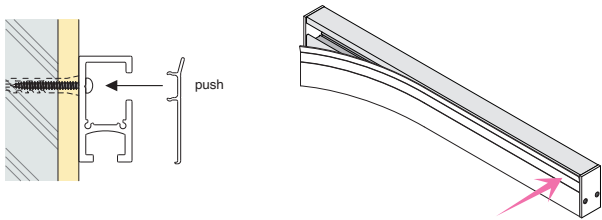
MH-3

70kg/m

Type: wall-mounted  
Function: rail system  
Material: aluminum  
Finish: anodized aluminum (cover: white)  
Description  
anchor placement: within 300mm  
length: 2,000mm

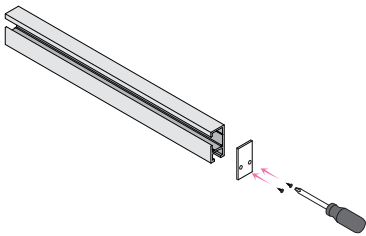
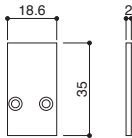


MH-3 2000 white CODE:125212



MH-3E white

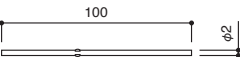
Function: end cap  
Material: aluminum



MH-3E white CODE:125303

J1-03

Function: joint pin  
Material: steel



J1-03 CODE:120205

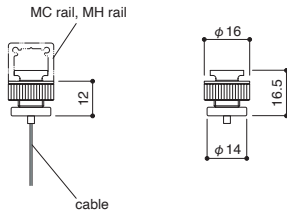
picture rail / MC/MH rail fitting -ceiling-



AM-32R-R

φ 0.6 : 3kg φ 0.8 : 5kg

Type: MC/MH rail fitting  
Function: ceiling  
Material: brass  
Finish: matte nickel plating



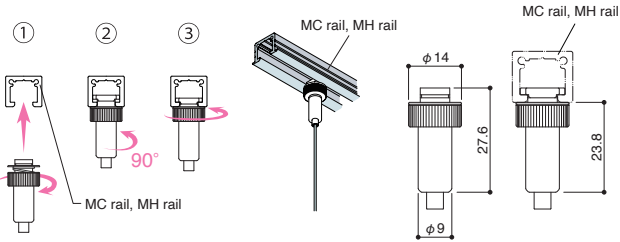
AM-32R-R CODE:270101



BS-32R-R

φ 1.0 : 8kg φ 1.2 : 10kg φ 1.5 : 30kg

Type: MC/MH rail fitting  
Function: ceiling  
Material: brass  
Finish: matte nickel plating (silver)  
white painted (white)  
black painted (black)



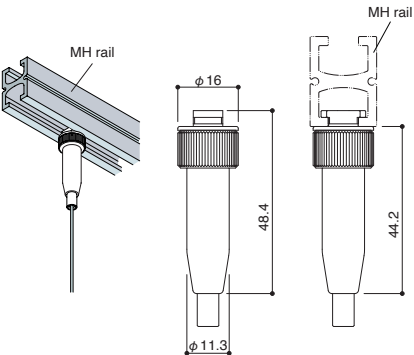
BS-32R-R silver CODE:273201  
BS-32R-R white CODE:273202  
BS-32R-R black CODE:273203



SF-32R-R

φ 1.5 : 30kg φ 2.0 : 50kg φ 2.5 : 70kg

Type: MH rail fitting  
Function: ceiling  
Material: stainless, brass  
Finish: satin, matte nickel plating



SF-32R-R CODE:270301



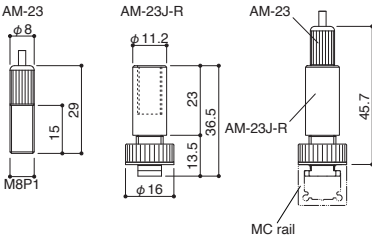
picture rail / MC/MH rail fitting -floor tensioner-



AM-23 + AM-23J-R

φ 0.6, φ 0.8

Type: MC rail fitting  
Function: floor  
Material: brass  
Finish: matte nickel plating



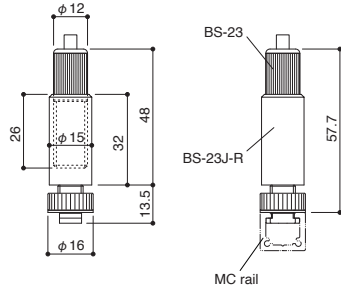
AM-23 CODE:262301  
AM-23J-R CODE:270103



BS-23J-Rset

φ 1.0, φ 1.2, φ 1.5

Type: MC rail fitting  
Function: floor  
Material: brass  
Finish: matte nickel plating



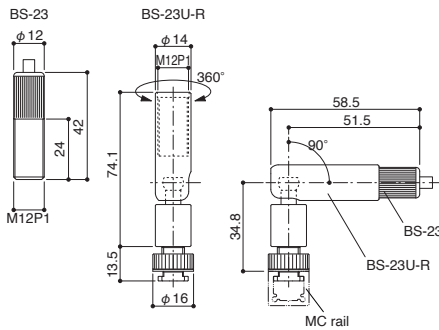
BS-23J-Rset CODE:272323



BS-23 + BS-23U-R

φ 1.0, φ 1.2, φ 1.5

Type: MC rail fitting  
Function: floor  
Material: brass  
Finish: matte nickel plating



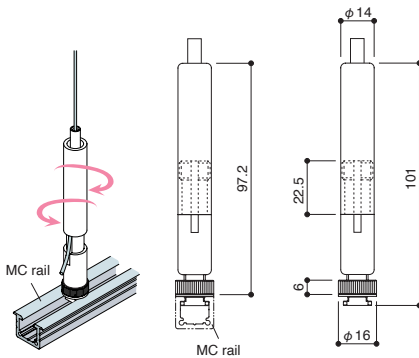
BS-23 CODE:72301  
BS-23U-R CODE:270204



TF-18+TR-R

φ 1.5, φ 2.0, φ 2.5

Type: MC rail fitting  
Function: floor  
Material: stainless, brass  
Finish: matte nickel plating



TF-18+TR-R CODE:270304





ceiling - point

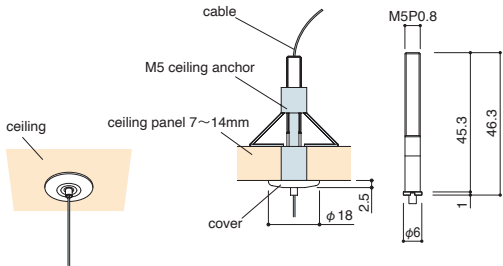
ceiling / recessed



### AMT-5

$\phi 0.6$  : 3kg  $\phi 0.8$  : 5kg

Type: M5 borad anchor  
Function: ceiling  
Material: brass (cover:PP)  
Finish: nickel plating



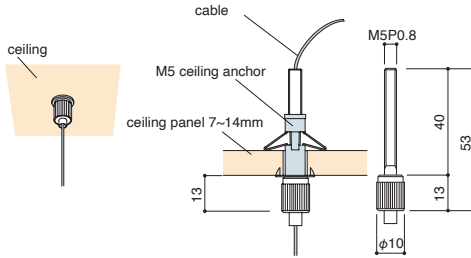
AMT-5 CODE:260501



### AT-5

$\phi 1.0$  : 8kg  $\phi 1.2$  : 10kg

Type: M5 borad anchor  
Function: ceiling  
Material: brass  
Finish: chrome plating



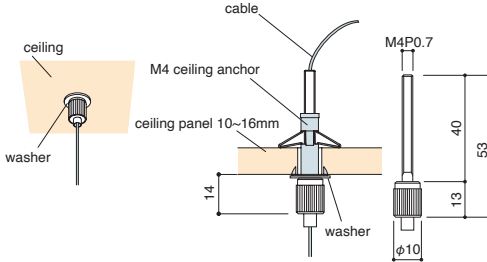
AT-5 CODE:81101



### AT-1 white

$\phi 1.0 \cdot \phi 1.2$  : 5kg

Type: M4 borad anchor  
Function: ceiling  
Material: brass  
Finish: painting



AT-1white CODE:82101

ceiling / recessed



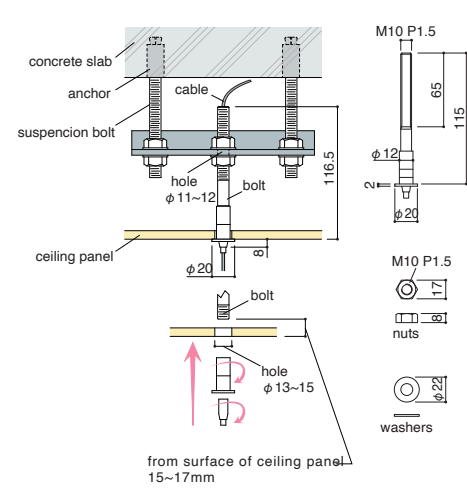
BS-27

φ 1.0 : 8kg   φ 1.2 : 10kg   φ 1.5 : 30kg

Type: **recessed**  
Function: **ceiling**  
Material: **stainless, brass, steel**  
Finish: **nickel plating, unichrome plating**

Description  
2 washers and 2 nuts are included

BS-27 CODE:72701



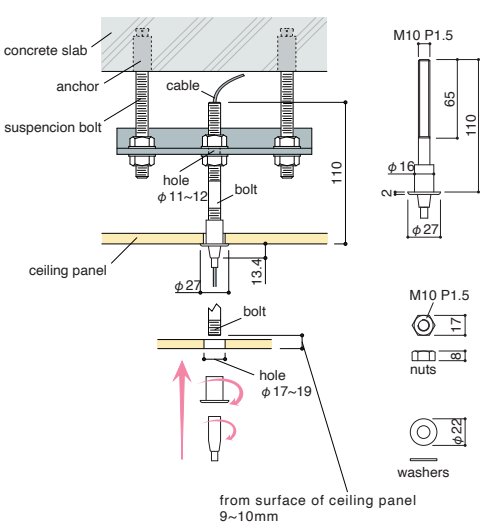
SF-27

φ 1.5 : 30kg   φ 2.0 : 50kg   φ 2.5 : 70kg

Type: **recessed**  
Function: **ceiling**  
Material: **stainless, zinc die-casting, steel**  
Finish: **satin, satin nickel plating, unichrome plating**

Description  
2 washers and 2 nuts are included

SF-27 CODE:22701



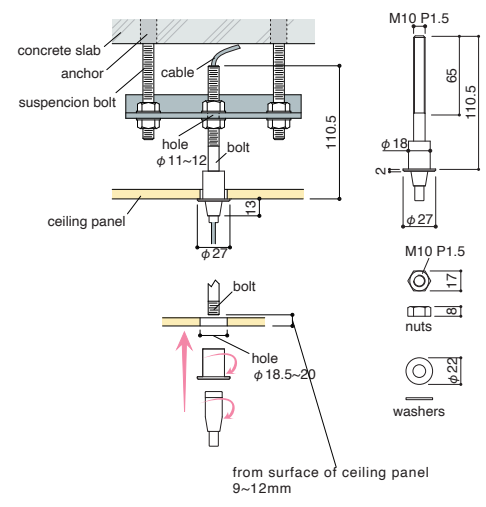
MF-27

φ 3.0 : 100kg

Type: **recessed**  
Function: **ceiling**  
Material: **stainless, brass, steel**  
Finish: **matte nickel plating, unichrome plating**

Description  
2 washers and 2 nuts are included

MF-27 CODE:182702



ceiling / nut anchor

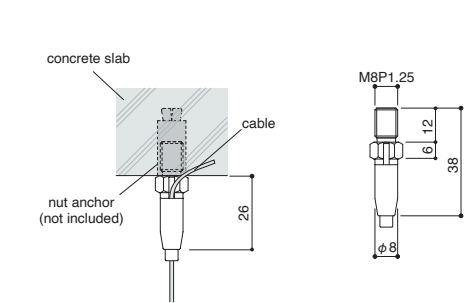


BS-38+T

φ 1.0 : 8kg   φ 1.2 : 10kg   φ 1.5 : 30kg

Type: **M8 nut anchor**  
Function: **ceiling**  
Material: **stainless, brass**  
Finish: **satin, nickel plating**

BS-38+T CODE:73804

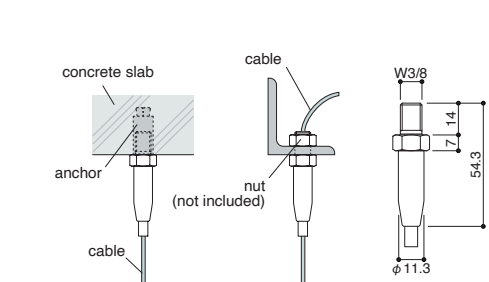


SF-38

φ 1.5 : 30kg   φ 2.0 : 50kg   φ 2.5 : 70kg

Type: **W3/8 nut anchor**  
Function: **ceiling**  
Material: **stainless, steel**  
Finish: **satin, nickel plating**

SF-38 CODE:23801

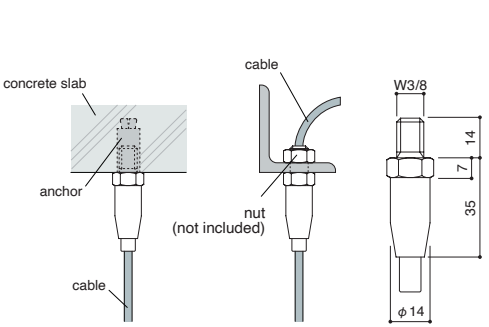


MF-38

φ 3.0 : 100kg

Type: **W3/8 nut anchor**  
Function: **ceiling**  
Material: **stainless**  
Finish: **satin**

MF-38 CODE:183803





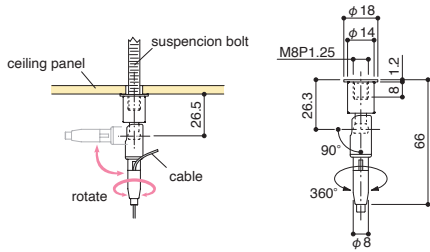
ceiling / bolt anchor, universal



BS-32+T

φ 1.0 : 8kg φ 1.2 : 10kg φ 1.5 : 30kg

Type: bolt anchor / universal  
Function: ceiling  
Material: stainless, steel, brass  
Finish: satin, matte nickel plating  
—  
Description  
1 washer is included



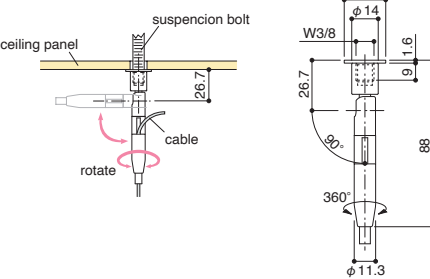
BS-32+T CODE:73204



SF-32+T

φ 1.5 : 30kg φ 2.0 : 50kg φ 2.5 : 70kg

Type: bolt anchor / universal  
Function: ceiling  
Material: stainless, steel, brass  
Finish: satin, matte nickel plating  
—  
Description  
1 washer is included



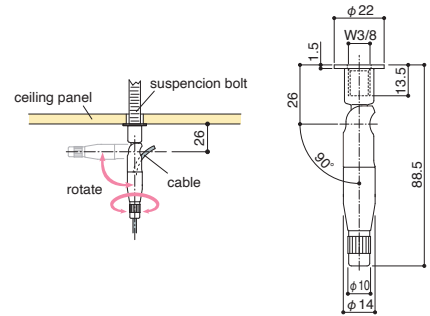
SF-32+T CODE:33206



MF-32+T-S

φ 3.0 : 100kg

Type: bolt anchor / universal  
Function: ceiling  
Material: stainless  
—  
Description  
1 washer is included

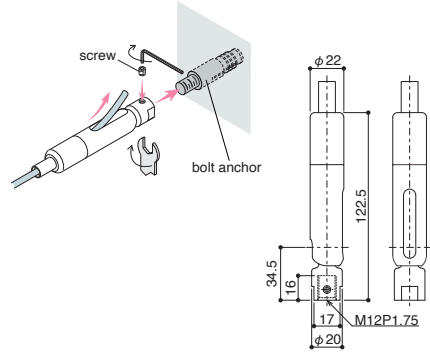


MF-32+T-S CODE:183202



WF-32+T φ 3.0 : 100kg φ 4.0 : 150kg φ 5.0 : 200kg φ 6.0 : 300kg

Type: bolt anchor / universal  
Function: ceiling  
Material: stainless



WF-32+T CODE:563201

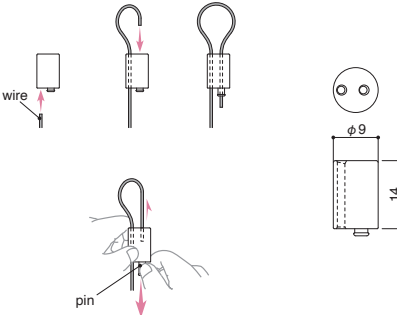
ceiling / make a loop



AL-1

φ 0.6 : 3kg φ 0.8 : 5kg φ 1.0 : 8kg

Type: make a loop  
Function: ceiling  
Material: brass  
Finish: chrome plating



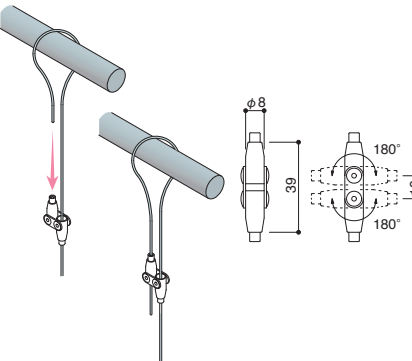
AL-1 CODE:81201



BS-25

φ 1.0 : 8kg φ 1.2 : 10kg φ 1.5 : 30kg

Type: make a loop  
Function: ceiling  
Material: stainless  
Finish: satin



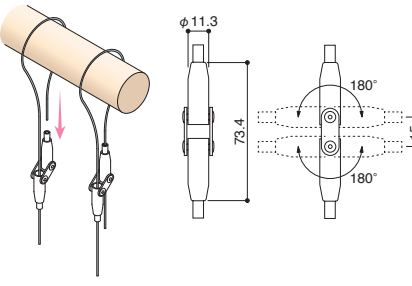
BS-25 CODE:72505



SF-25

φ 1.5 : 30kg φ 2.0 : 50kg φ 2.5 : 70kg

Type: make a loop  
Function: ceiling  
Material: stainless  
Finish: satin



SF-25 CODE:22501

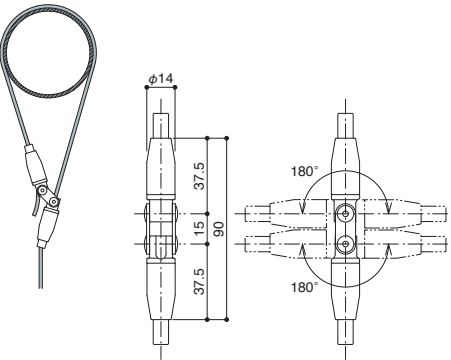
SF-25S CODE:22502



MF-25

φ 3.0 : 100kg

Type: make a loop  
Function: ceiling  
Material: stainless



MF-25 CODE:182503

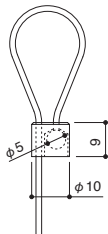


ceiling / make a loop with wire



**RB-15**  $\phi 1.0$ : 8kg  $\phi 1.5$ : 30kg

Type: make a loop with wire  
Function: ceiling  
Material: stainless

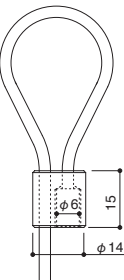


	L=1,000mm	L=2,000mm	L=3,000mm
$\phi 1.0$	RB-15 1010 CODE:90601010	RB-15 1020 CODE:90601020	RB-15 1030 CODE:90601030
$\phi 1.5$	RB-15 1510 CODE:90601510	RB-15 1520 CODE:90601520	RB-15 1530 CODE:90601530

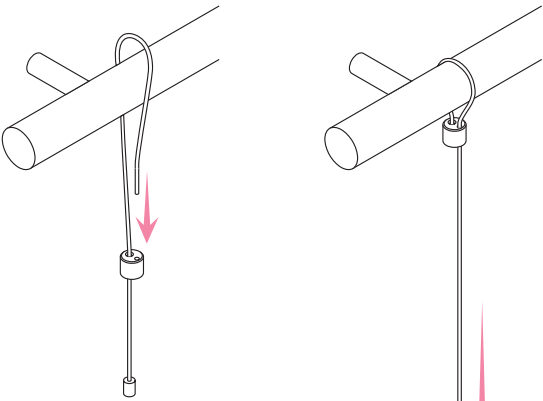
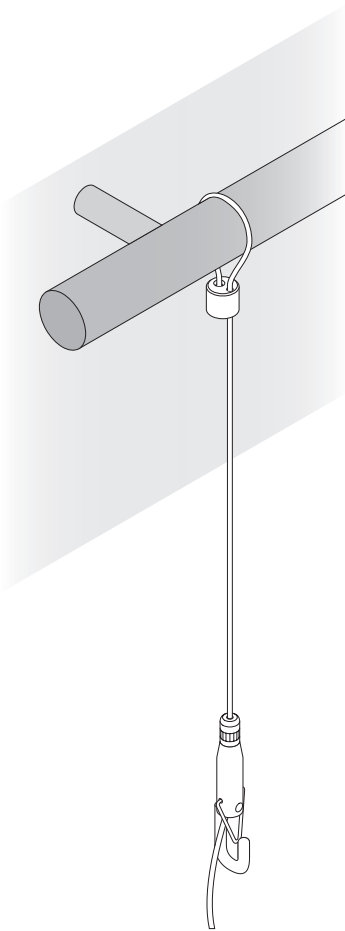


**RB-30**  $\phi 2.0$ : 50kg  $\phi 2.5$ : 70kg  $\phi 3.0$ : 100kg

Type: make a loop with wire  
Function: ceiling  
Material: stainless



	L=1,000mm	L=2,000mm	L=3,000mm
$\phi 2.0$	RB-30 2010 CODE:90612010	RB-30 2020 CODE:90612020	RB-30 2030 CODE:90612030
$\phi 2.5$	RB-30 2510 CODE:90612510	RB-30 2520 CODE:90612520	RB-30 2530 CODE:90612530
$\phi 3.0$	RB-30 3010 CODE:90613010	RB-30 3020 CODE:90613020	RB-30 3030 CODE:90613030



- How to use?
1. Insert soldered end wire into a largest hole of the hardware
  2. Turn the wire over and around a pipe etc.
  3. Insert the wire into another hole to make a loop.

Instruction video



©NOSIGNER



midway

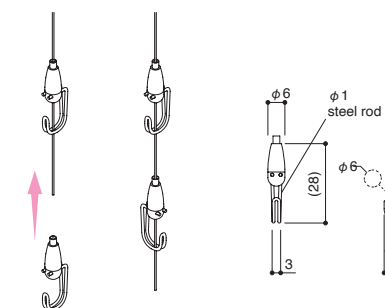


midway / hook

## AM-20

φ 0.6 : 3kg φ 0.8 : 5kg

Type: **hook**  
Function: **midway**  
Material: **brass, steel**  
Finish: **chrome plating**



AM-20 CODE:262001

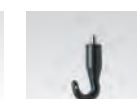
## AF-3 series

φ 1.0 : 8kg φ 1.2 : 10kg

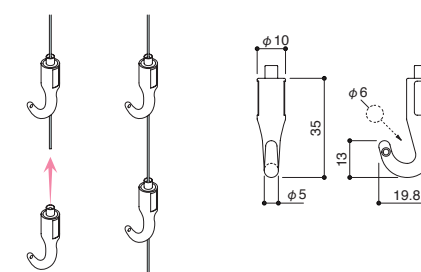
Type: **hook**  
Function: **midway**  
Material: **zinc die-casting**  
Finish: **chrome plating (AF-3 chrome), white painted(AF-3 white), black painted(AF-3 black),**



AF-3 white  
CODE:80202



AF-3 black  
CODE:80203



AF-3 chrome CODE:80201

## AF-3P series

φ 1.0 : 8kg φ 1.2 : 10kg

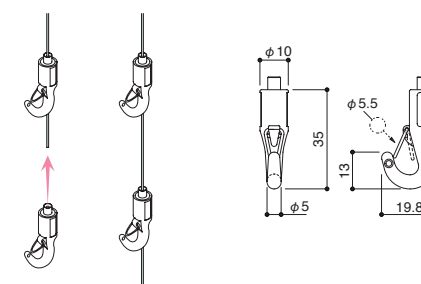
Type: **hook**  
Function: **midway**  
Material: **zinc die-casting**  
Finish: **chrome plating (AF-3P chrome), white painted(AF-3P white), black painted(AF-3P black),**



AF-3P white  
CODE:80602



AF-3P black  
CODE:80603



AF-3P chrome CODE:80601

## AF-3 SUS φ 1.0 : 8kg φ 1.2 : 10kg φ 1.5 : 30kg

Type: **hook**  
Function: **midway**  
Material: **stainless**  
Finish: **matte finish**

AF-3 SUS CODE:80204

## AF-3P SUS φ 1.0 : 8kg φ 1.2 : 10kg φ 1.5 : 30kg

Type: **hook**  
Function: **midway**  
Material: **stainless**  
Finish: **matte finish**

AF-3P SUS CODE:80604

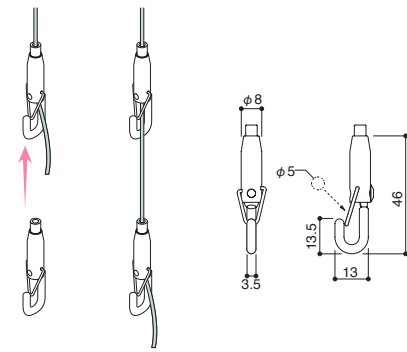


BS-20RP

Type: **hook**  
Function: **midway**  
Material: **stainless**  
Finish: **satin**

BS-20RP CODE:72012  
BS-20RP-S CODE:72003

$\phi$  1.0 : 8kg    $\phi$  1.2 : 10kg    $\phi$  1.5 : 30kg

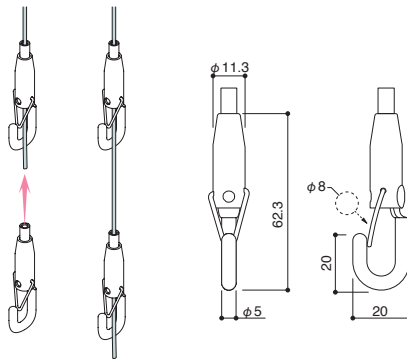


SF-20RP

Type: **hook**  
Function: **midway**  
Material: **stainless**  
Finish: **satin**

SF-20RP CODE:22009  
SF-20RP-S CODE:22006

$\phi$  1.5 : 30kg    $\phi$  2.0 : 50kg

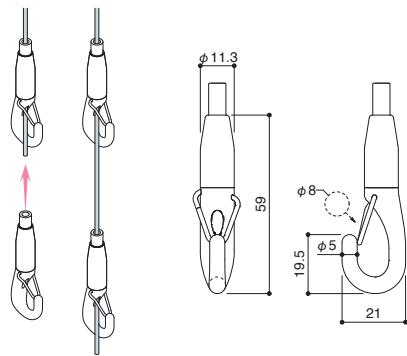


SM-20VP

Type: **hook**  
Function: **midway**  
Material: **stainless**  
Finish: **satin**

SM-20VP CODE:172009  
SM-20VP-S CODE:172006

$\phi$  2.5 : 70kg    $\phi$  3.0 : 100kg

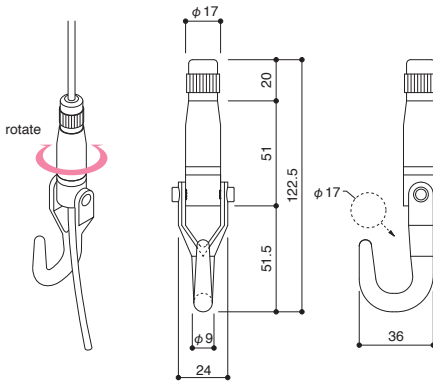


VF-20S

Type: **hook**  
Function: **midway**  
Material: **stainless**  
Finish: **matte finish**

VF-20S CODE:190010

$\phi$  4.0 : 150kg

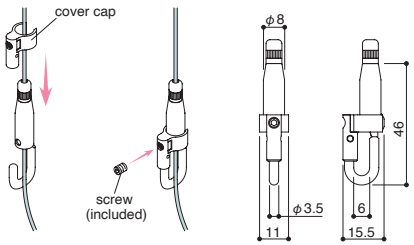


KH-1S

Type: **security hook**  
Function: **midway**  
Material: **stainless, zinc die-casting**  
Finish: **satin, matte nickel plating**

KH-1S CODE:180402

$\phi$  1.0 : 8kg    $\phi$  1.2 : 10kg    $\phi$  1.5 : 30kg

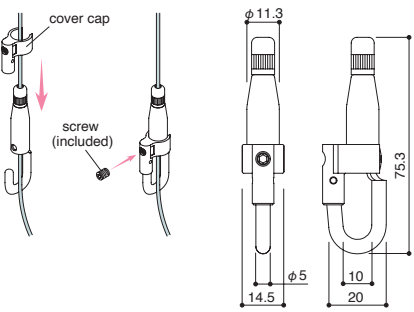


KH-2S

Type: **security hook**  
Function: **midway**  
Material: **stainless, zinc die-casting**  
Finish: **satin, matte nickel plating**

KH-2S CODE:180404

$\phi$  1.5 : 30kg    $\phi$  2.0 : 50kg

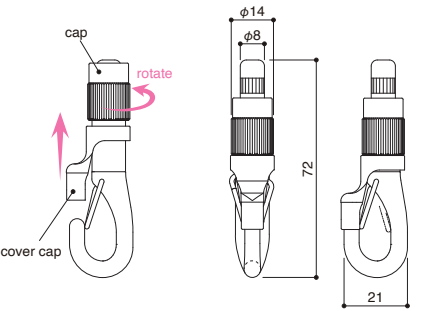


SM-20VKP-S

Type: **security hook**  
Function: **midway**  
Material: **stainless, brass**  
Finish: **satin, matte nickel plating**

SM-20VKP-S CODE:172002

$\phi$  2.5 : 70kg    $\phi$  3.0 : 100kg

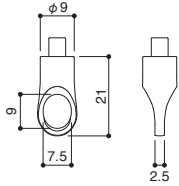






**BS-22**       $\phi 1.0$ : 8kg    $\phi 1.2$ : 10kg    $\phi 1.5$ : 30kg

Type: ring  
Function: midway  
Material: brass  
Finish: chrome plating

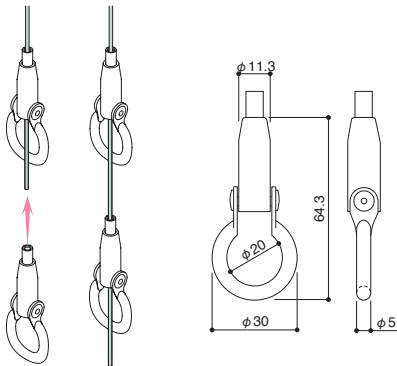


**BS-22** CODE:72201



**SF-21**       $\phi 1.5$ : 30kg    $\phi 2.0$ : 50kg    $\phi 2.5$ : 70kg

Type: ring  
Function: midway  
Material: stainless  
Finish: satin

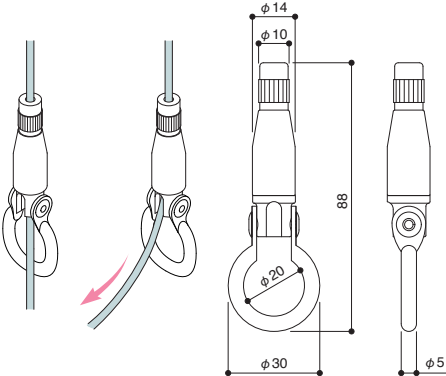


**SF-21** CODE:22101



**MF-21S**       $\phi 3.0$ : 100kg

Type: ring  
Function: midway  
Material: stainless

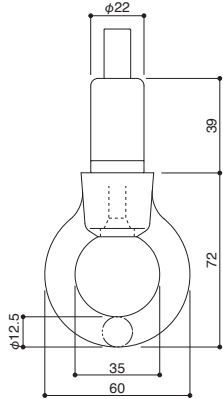


**MF-21S** CODE:182101



**WF-21**       $\phi 3.0$ : 100kg    $\phi 4.0$ : 150kg    $\phi 5.0$ : 200kg    $\phi 6.0$ : 300kg

Type: ring  
Function: midway  
Material: stainless



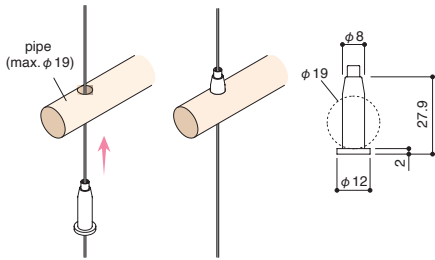
**WF-21** CODE:562101



**BS-16**       $\phi 1.0$ : 8kg    $\phi 1.2$ : 10kg    $\phi 1.5$ : 30kg

Type: pipe  
Function: midway  
Material: stainless, brass  
Finish: satin, nickel plating

Description  
Drill a 9mm hole on hang pipe or shelving, insert BS-16 from underneath.



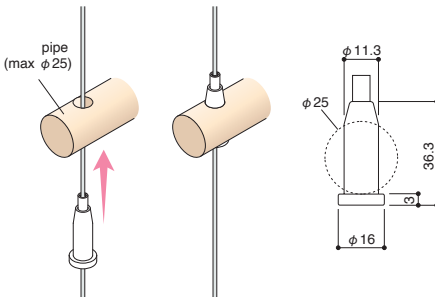
**BS-16** CODE:71601



**SF-16**       $\phi 1.5$ : 30kg    $\phi 2.0$ : 50kg    $\phi 2.5$ : 70kg

Type: pipe  
Function: midway  
Material: stainless  
Finish: satin

Description  
Drill a 12mm hole on hang pipe or shelving, insert SF-16 from underneath.



**SF-16** CODE:21601

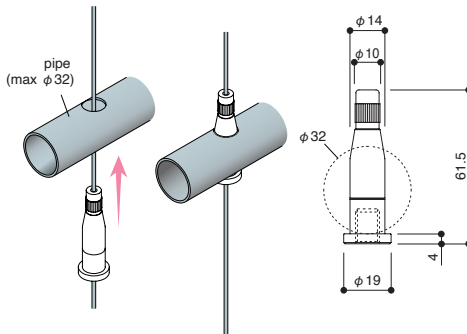
**SF-16S** CODE:21602



**MF-16S**       $\phi 3.0$ : 100kg

Type: pipe  
Function: midway  
Material: stainless

Description  
Drill a 15mm hole on hang pipe or shelving, insert MF-16S from underneath.

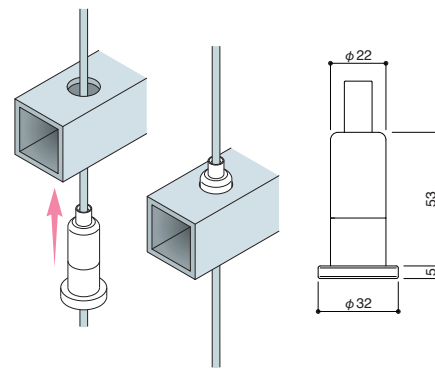


**MF-16S** CODE:181601



**WF-16**       $\phi 3.0$ : 100kg    $\phi 4.0$ : 150kg    $\phi 5.0$ : 200kg    $\phi 6.0$ : 300kg

Type: pipe  
Function: midway  
Material: stainless



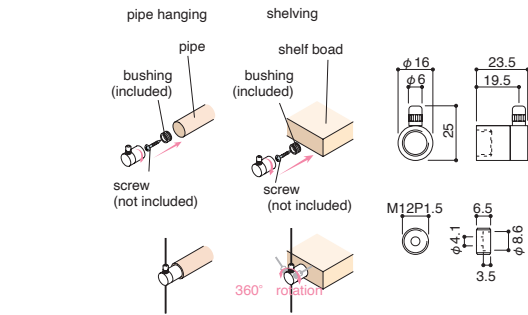
**WF-16** CODE:561601



BRB-1S

Type: shelving  
Function: midway  
Material: brass  
Finish: matte nickel plating

φ 1.0 : 8kg   φ 1.2 : 10kg   φ 1.5 : 30kg



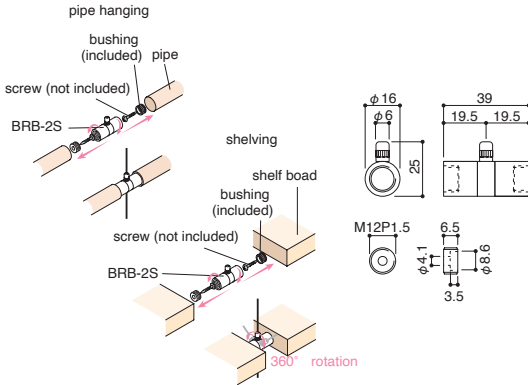
BRB-1S CODE:50401



BRB-2S

Type: shelving  
Function: midway  
Material: brass  
Finish: matte nickel plating

φ 1.0 : 8kg   φ 1.2 : 10kg   φ 1.5 : 30kg



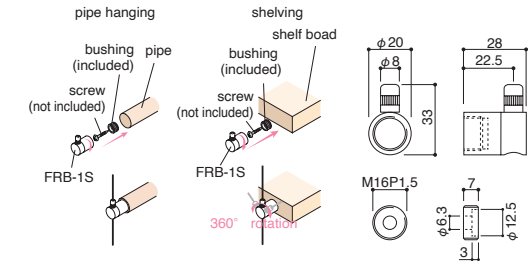
BRB-2S CODE:50402



FRB-1S

Type: shelving  
Function: midway  
Material: stainless

φ 1.5 : 30kg   φ 2.0 : 50kg   φ 2.5 : 70kg



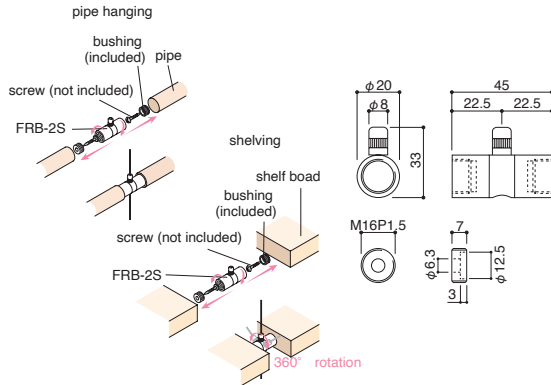
FRB-1S CODE:50211



FRB-2S

Type: shelving  
Function: midway  
Material: stainless

φ 1.5 : 30kg   φ 2.0 : 50kg   φ 2.5 : 70kg



FRB-2S CODE:50212

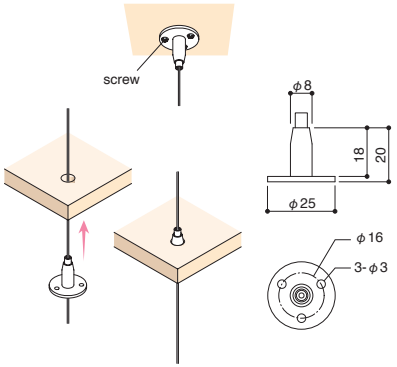


BS-35

Type: shelving  
Function: midway  
Material: stainless  
Finish: satin

φ 1.0 : 8kg   φ 1.2 : 10kg   φ 1.5 : 30kg

Description  
Drill a 9mm hole on shelving, insert BS-35 from underneath. Maximum shelf thickness is 15mm. Make sure the strength of the screws and ceiling materials.



BS-35 CODE:73501

BS-35S CODE:73502

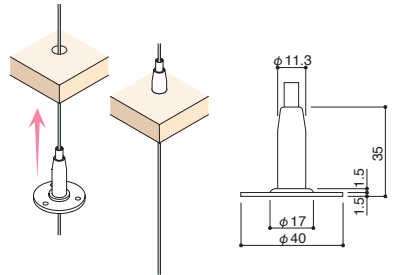


SF-35

Type: shelving  
Function: midway  
Material: stainless  
Finish: satin

φ 1.5 : 30kg   φ 2.0 : 50kg   φ 2.5 : 70kg

Description  
Drill a 12mm hole on shelving, insert SF-35 from underneath.



SF-35 CODE:23501

SF-35S CODE:23502

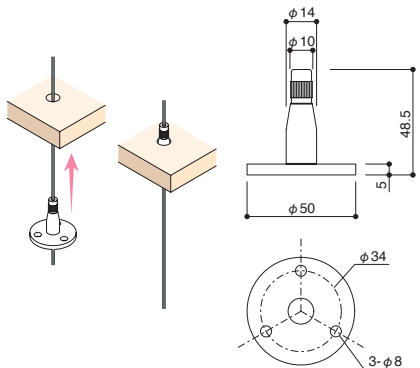


MF-35S

Type: shelving  
Function: midway  
Material: stainless

φ 3.0 : 100kg

Description  
Drill a 15mm hole on shelving, insert MF-35S from underneath.



MF-35S CODE:183501



BS / SF / MF-35 are also use ceiling and floor.

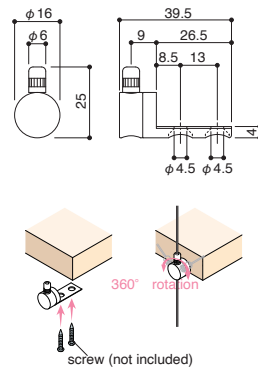




## BRL-1S

φ 1.0: 8kg   φ 1.2: 10kg   φ 1.5: 30kg

Type: **shelving**  
Function: **midway**  
Material: **brass**  
Finish: **matte nickel plating**



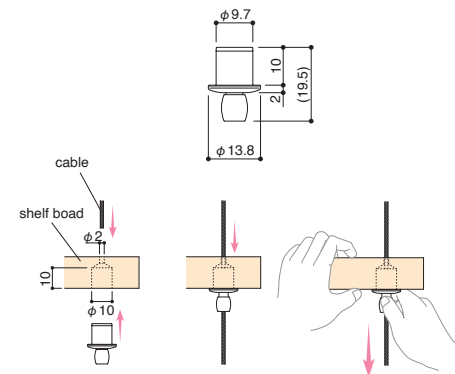
**BRL-1S** CODE:50501



## BU-70

φ 1.0: 8kg   φ 1.2: 10kg   φ 1.5: 30kg

Type: **shelving**  
Function: **midway**  
Material: **steel, brass**  
Finish: **chrome plating**



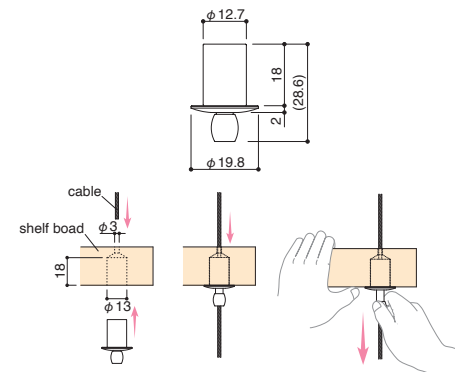
BU-70 CODE:330101



## SU-70

φ 1.5 : **30**kg   φ 2.0 : **50**kg   φ 2.5 : **70**kg

Type: **shelving**  
Function: **midway**  
Material: **steel, brass**  
Finish: **chrome plating**



SU-70 CODE:330201



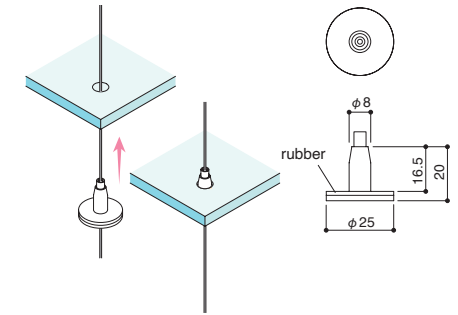
## BS-35+R

ø 1.0: 8kg   ø 1.2: 10kg   ø 1.5: 30kg

Type: **glass/ acrylic shelving**  
Function: **midway**  
Material: **stainless, silicone rubber**  
Finish: **satin**

### Description

Drill a 9mm hole on shelving, insert BS-35+R from underneath.



BS-35+R CODE:73503



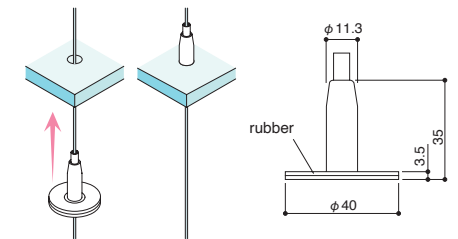
## SF-35+R

φ 1.5: **30kg**   φ 2.0: **50kg**   φ 2.5: **70kg**

Type: **glass/ acrylic shelving**  
Function: **midway**  
Material: **stainless, silicone rubber**  
Finish: **satin**

### Description

Drill a 12mm hole on shelving, insert SF-35+R from underneath.



SF-35+R CODE:23503



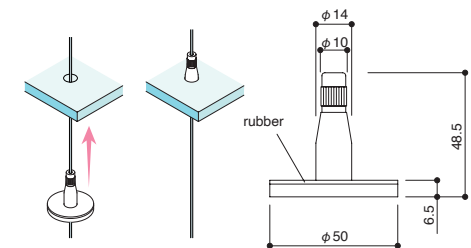
## MF-35+R-S

$\phi 3.0 : 100\text{kg}$

Type: **glass/ acrylic shelving**  
Function: **midway**  
Material: **stainless, silicone rubber**

### Description

Drill a 15mm hole on shelving, insert MF-35+R-S from underneath.



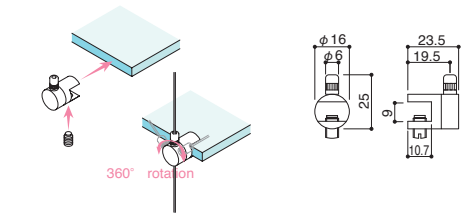
MF-35 + R-S CODE:183505



BRG-1S

φ 1.0 : 8kg   φ 1.2 : 10kg   φ 1.5 : 30kg

Type: glass shelving  
Function: midway  
Material: brass  
Finish: matte nickel plating  
—  
Description  
shelf/panel/sign thickness must be 5-8mm.



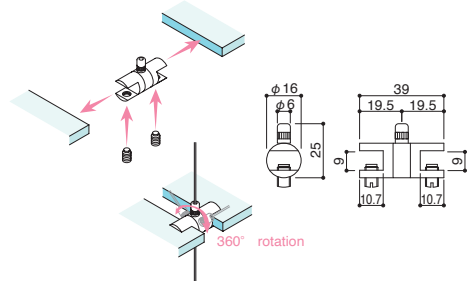
BRG-1S CODE:50301



BRG-2S

φ 1.0 : 8kg   φ 1.2 : 10kg   φ 1.5 : 30kg

Type: glass shelving  
Function: midway  
Material: brass  
Finish: matte nickel plating  
—  
Description  
shelf/panel/sign thickness must be 5-8mm.



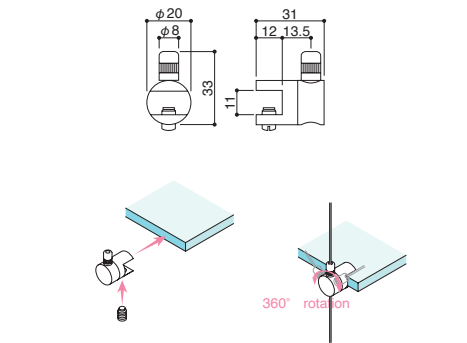
BRG-2S CODE:50302



FRG-1S

φ 1.5 : 30kg   φ 2.0 : 50kg   φ 2.5 : 70kg

Type: glass shelving  
Function: midway  
Material: stainless  
—  
Description  
shelf/panel/sign thickness must be 5-8mm.



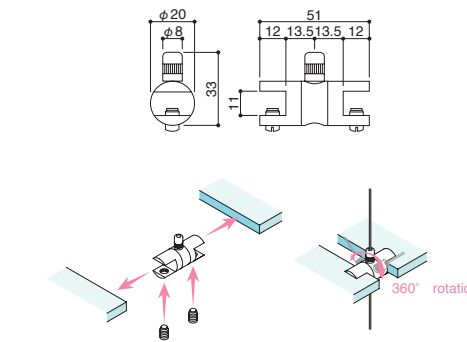
FRG-1S CODE:50111



FRG-2S

φ 1.5 : 30kg   φ 2.0 : 50kg   φ 2.5 : 70kg

Type: glass shelving  
Function: midway  
Material: stainless  
—  
Description  
shelf/panel/sign thickness must be 5-8mm.



FRG-2S CODE:50112



Box shelving  
BRB-1S   φ 1.5 - φ 2.5

p.56



Wood shelving  
BRL-1S   φ 1.0 - φ 1.5

p.58



Wood shelving  
BU-70   φ 1.0 - φ 1.5

p.58



Glass shelving  
FRG-1S   φ 1.5 - φ 2.5

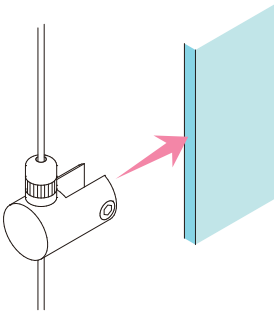
p.60



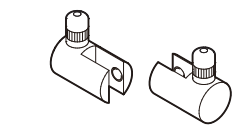


Clamping Panels

No need to drill holes in the panels to hang. The part to be selected changes with the width of the panel.



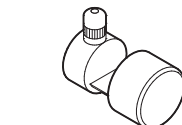
-300mm



BSC-1S set  
φ 1.0 - φ 1.2  
panel size - 300 mm

p.63

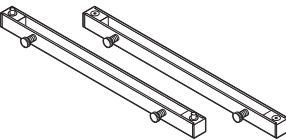
300 - 600mm



BSU-1S  
φ 1.0 - φ 1.5  
panel size 300 - 600 mm

p.64

600 - 1200mm

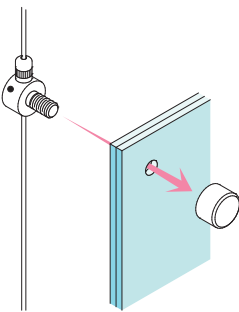


PPH-1R  
φ 1.0 - φ 1.5  
panel size 600 - 1200 mm

p.68

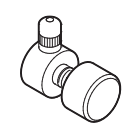
Note: The width of panel(mm) is a standard of panel size.

Mounting Panels



Possible to be hung securely by making a hole in the panel.  
The part to be selected changes with the weight of the panel.

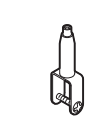
8kg - 30kg



BSK-1S  
φ 1.0 - φ 1.5

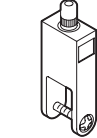
p.65

30kg - 70kg



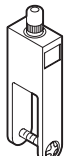
BS-31  
φ 1.0 - φ 1.5

p.67



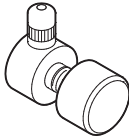
SF-31S  
φ 1.5 - φ 2.5

p.67



SF-31L-S  
φ 1.5 - φ 2.5

p.67



SFK-1S  
φ 1.5 - φ 2.5

p.66

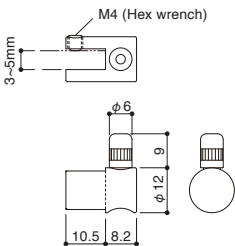


BSC-1S set

Type: panel  
Function: midway  
Material: brass  
Finish: chrome plating  
Description  
Clamping the panels from the side.  
Pairs of grippers (left and right)

BSC-1S set CODE:79034

φ 1.0 φ 1.2



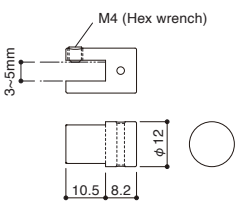
BSC-1S set



BSC-1G set

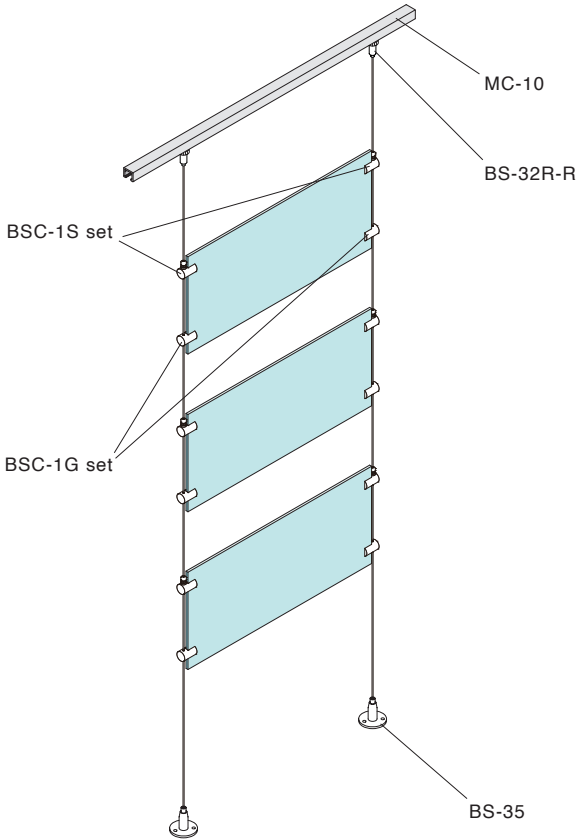
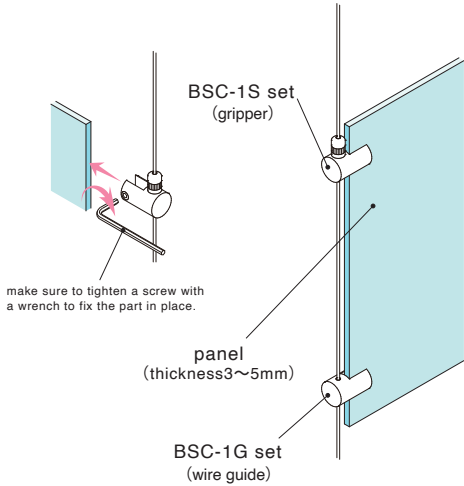
Description  
Clamping the panels from the side.  
Pairs of grippers (left and right)

BSC-1G set CODE:79035



BSC-1G set

■ Clamping the panels from the side.



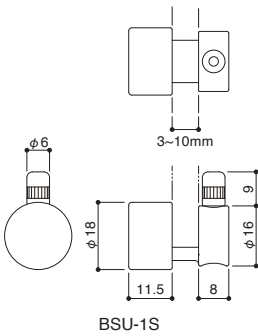


BSU-1S

Type: **panel**  
Function: **midway**  
Material: **brass**  
Finish: **chrome plating**  
Description  
Clamping the panels from the bottom.

BSU-1S CODE:79212

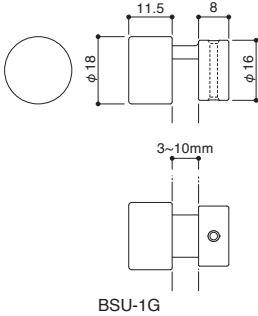
φ 1.0 φ 1.2 φ 1.5



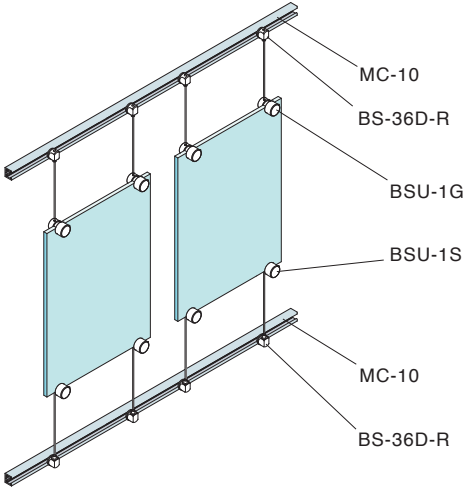
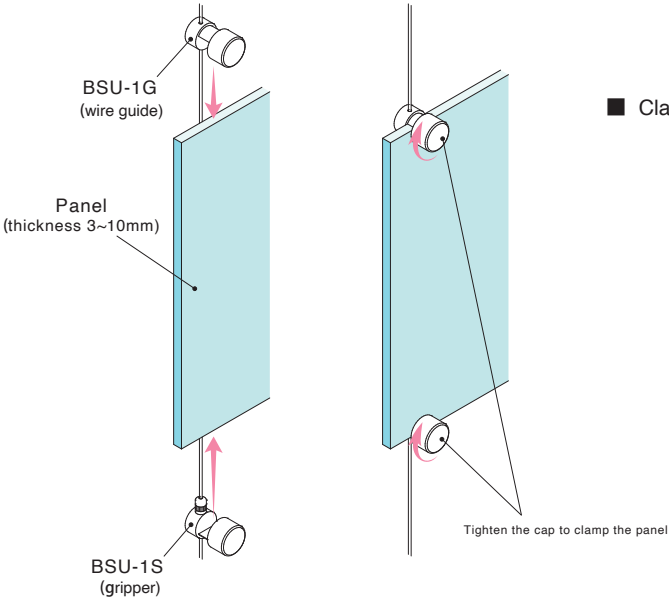
BSU-1G

Description  
Wire guide  
Clamping the panels from the top.

BSU-1G CODE:79213



■ Clamping panels from top and bottom without drilling holes.



A3 panels with BSU-1S & BSU-1G

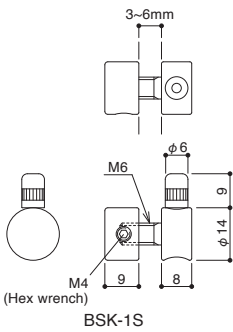


BSK-1S

Type: **panel**  
Function: **midway**  
Material: **brass**  
Finish: **chrome plating**  
Description  
Mounting the panels with holes.

BSK-1S CODE:79112

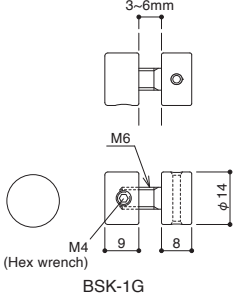
φ 1.0 : 8kg φ 1.2 : 10kg φ 1.5 : 30kg



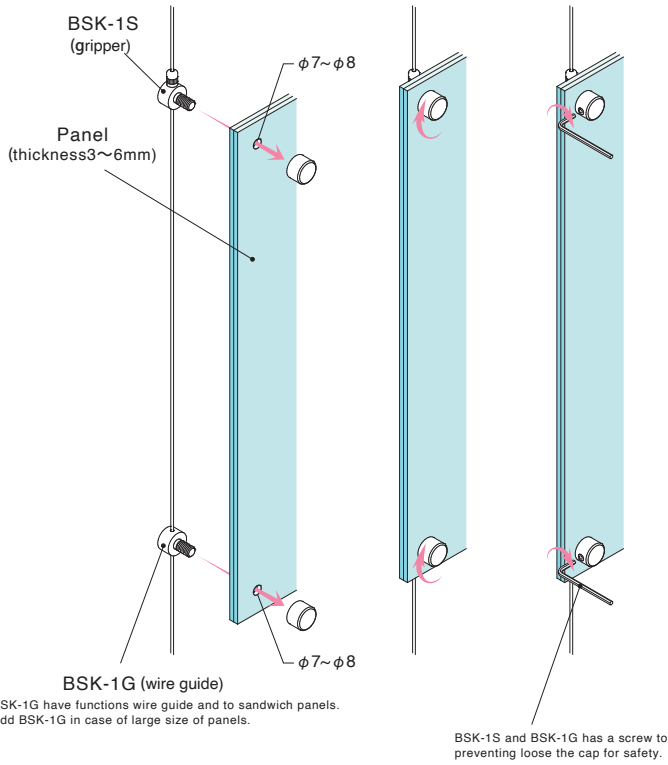
BSK-1G

Description  
Wire guide  
Mounting the panels with holes.

BSK-1G CODE:79113



■ Mounting panels with holes, suitable for large and heavy panels



A2 panel with two BSK-1S and four BSK-1G.





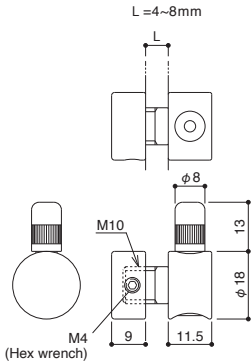
SFK-1S

φ 1.5 : 30kg   φ 2.0 : 50kg   φ 2.5 : 70kg

Type: panel  
Function: midway  
Material: brass  
Finish: chrome plating

Description  
Mounting the panels with holes.  
panel thick 4~8mm

SFK-1S CODE:29112



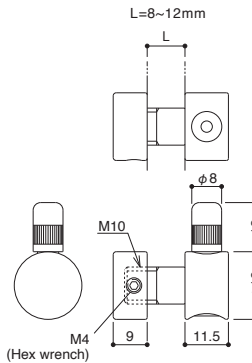
SFK-1L-S

φ 1.5 : 30kg   φ 2.0 : 50kg   φ 2.5 : 70kg

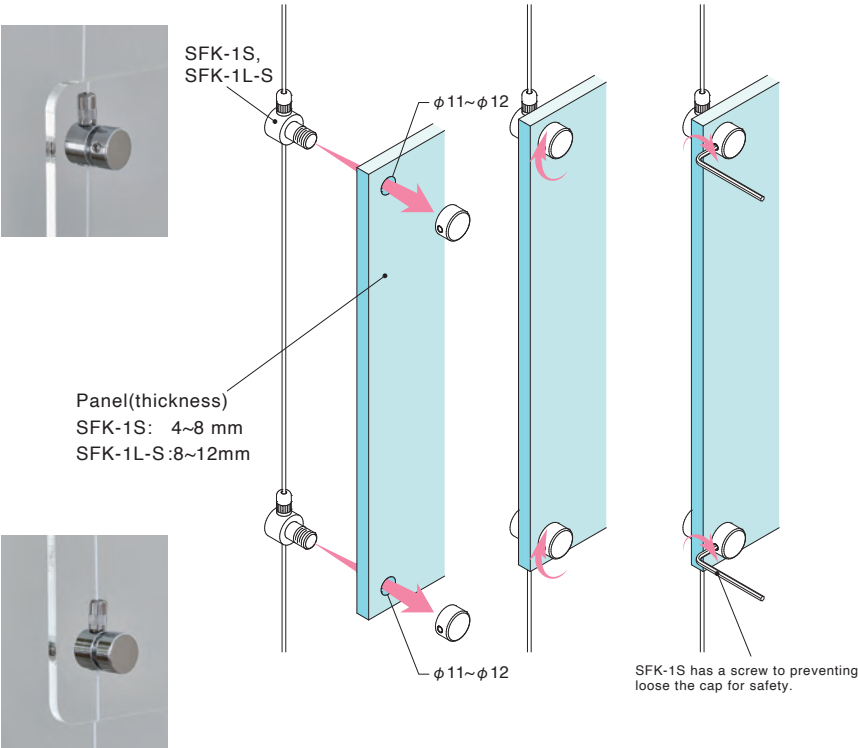
Type: panel  
Function: midway  
Material: brass  
Finish: chrome plating

Description  
Mounting the panels with holes.  
panel thick 8~12mm

SFK-1L-S CODE:29119



■ Mounting panels with holes, suitable for large and heavy panels

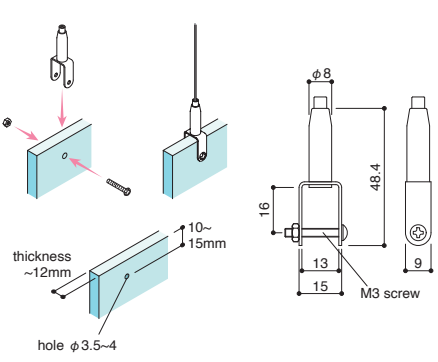


BS-31

φ 1.0 : 8kg   φ 1.2 : 10kg   φ 1.5 : 30kg

Type: panel  
Function: midway  
Material: stainless  
Finish: satin

BS-31 CODE:73101

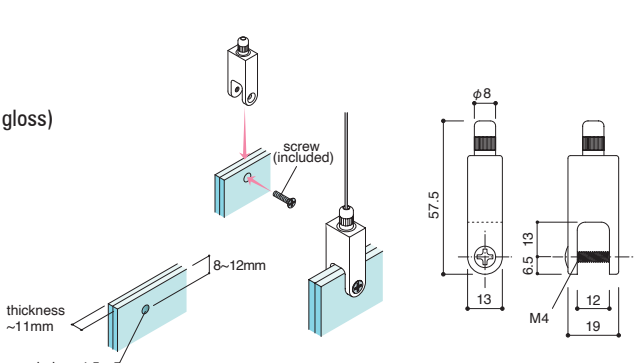


SF-31S

φ 1.5 : 30kg   φ 2.0 : 50kg   φ 2.5 : 70kg

Type: panel  
Function: midway  
Material: zinc die-casting  
Finish: satin nickel plating (semi gloss)

SF-31S CODE:23101

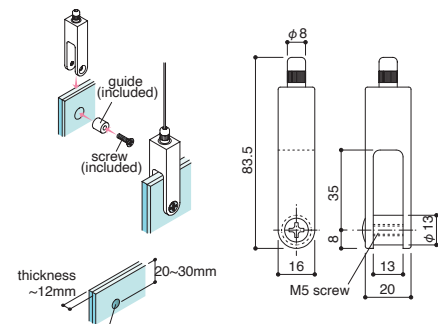


SF-31L-S

φ 1.5 : 30kg   φ 2.0 : 50kg   φ 2.5 : 70kg

Type: panel  
Function: midway  
Material: zinc die-casting, resin  
Finish: satin nickel plating (semi gloss)

SF-31L-S CODE:23102



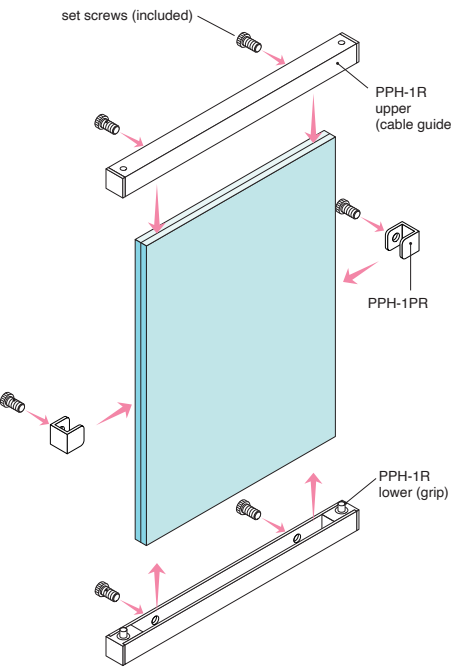
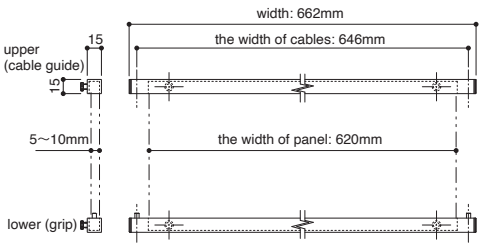


PPH-1R

φ 1.0 : 8kg   φ 1.2 : 10kg   φ 1.5 : 30kg

Type: panel hanger for acrylic panel  
(acrylic panels are not included)  
Function: midway  
Material: aluminum, zinc-die casting  
Finish: anodized aluminum, chrome plating

Description  
panel thickness must be within 10mm  
the width of panels must be 620mm,  
the width of cables is 646mm



PPH-1R-620 silver CODE:290062

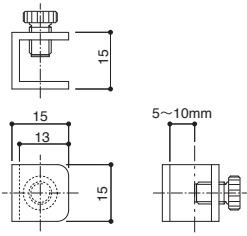


PPH-1PR

Type: panel hanger for acrylic panel  
(acrylic panels are not included)  
Function: midway  
Material: aluminum, brass  
Finish: anodized aluminum, chrome plating

Description  
panel thickness must be within 10mm

PPH-1PR silver CODE:290901



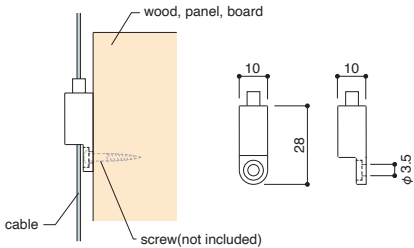




AD-1

φ 1.0 : 8kg   φ 1.2 : 10kg

Type: **screw**  
Function: **midway**  
Material: **steel, zinc die-casting**  
Finish: **chrome plating**



AD-1   CODE:80301

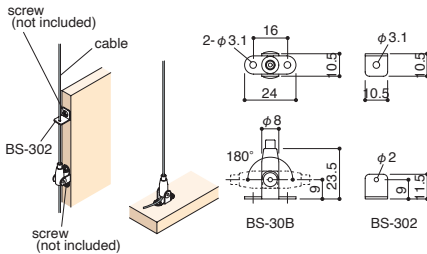


BS-30B

φ 1.0 : 8kg   φ 1.2 : 10kg   φ 1.5 : 30kg

Type: **screw**  
Function: **midway**  
Material: **stainless**  
Finish: **satin**  
Description  
BS-302:L bracket to guide cable

BS-30B   CODE:73005  
BS-30B-S   CODE:73006  
BS-302   CODE:10023001

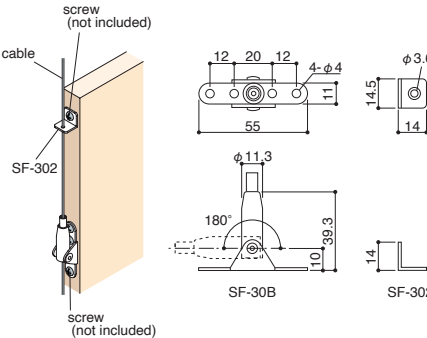


SF-30B

φ 1.5 : 30kg   φ 2.0 : 50kg   φ 2.5 : 70kg

Type: **screw**  
Function: **midway**  
Material: **stainless**  
Finish: **satin**  
Description  
SF-302:L bracket to guide cable

SF-30B   CODE:23005  
SF-30B-S   CODE:23006  
SF-302   CODE:10023006

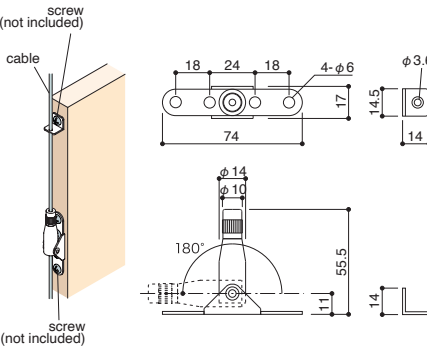


MF-30S

φ 3.0 : 100kg

Type: **screw**  
Function: **midway**  
Material: **stainless**  
Description  
L bracket to guide cable is included.

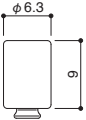
MF-30S   CODE:183001



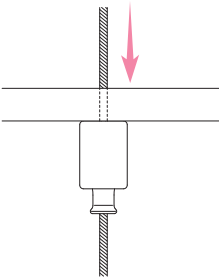
AU-72

φ 0.6 : 3kg   φ 0.8 : 5kg   φ 1.0,1.2 : 8kg

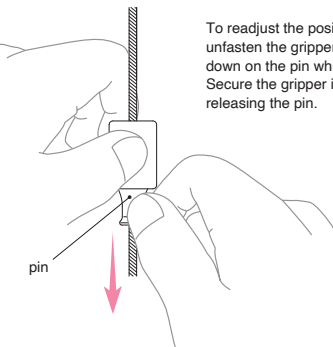
Type: **object**  
Function: **midway**  
Material: **brass**  
Finish: **chrome plating(silver)**  
          **black zinc plating(black)**



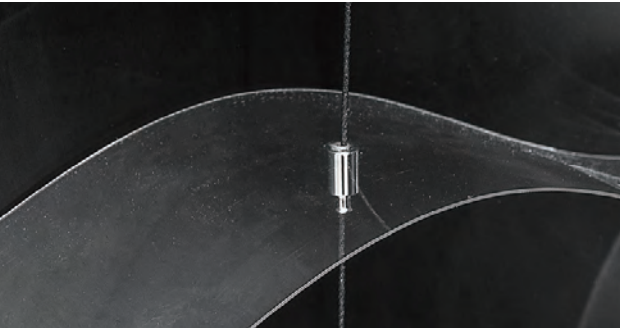
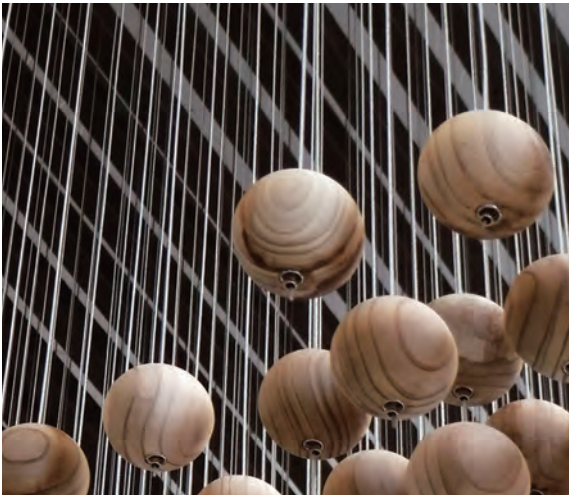
AU-72 silver   CODE:330021  
AU-72 black   CODE:330023



Insert the wire into the gripper and the gripper will naturally fix firmly on the wire. Objects can be placed on top of the gripper.



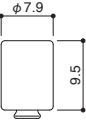
To readjust the position of the gripper, unfasten the gripper from the wire by holding down on the pin while pulling it downwards. Secure the gripper in place by once again releasing the pin.



BU-72

φ 1.0 : 8kg   φ 1.2 : 10kg   φ 1.5 : 30kg

Type: **object**  
Function: **midway**  
Material: **brass**  
Finish: **chrome plating**



BU-72   CODE:330121



AM-26

CODE:262611

Type: **mounted**  
Function: **midway**  
Material: **brass**  
Finish: **chrome plating (nut: nickel plating)**  
—  
Description  
The hole must be  $\phi 6.2$  to  $\phi 6.5$ .

$\phi 0.6 : 3\text{kg}$   $\phi 0.8 : 5\text{kg}$

Technical drawing of AM-26 showing dimensions:  $\phi 11$ ,  $50^\circ$ ,  $12.5$ ,  $9$ ,  $11$ ,  $M6P1$ . Installation diagrams show the component being mounted into a material with a nut (accessories) and a tapping operation.



AK-14

CODE:81005

Type: **mounted**  
Function: **midway**  
Material: **brass**  
Finish: **nickel plating**  
—  
Description  
It can be screwd directry into the M8 thread.

$\phi 0.6 : 3\text{kg}$   $\phi 0.8 : 5\text{kg}$   $\phi 1.0 : 8\text{kg}$   $\phi 1.2 : 10\text{kg}$

Technical drawing of AK-14 showing dimensions:  $M8$ ,  $\phi 9$ ,  $10.5$ ,  $1$ ,  $M8P1.25$ . Installation diagrams show the component being mounted into a material with a nut (accessories) and a tapping operation.



B5R6

CODE:60040106

B5R6-S

CODE:60040107

Type: **mounted**  
Function: **midway**  
Material: **brass (nut: steel)**  
Finish: **nickel plating**  
—  
Description  
The hole must be  $\phi 10.2$  to  $\phi 10.5$ .

$\phi 1.0 : 8\text{kg}$   $\phi 1.2 : 10\text{kg}$   $\phi 1.5 : 30\text{kg}$

Technical drawing of B5R6 showing dimensions:  $\phi 12$ ,  $1.6$ ,  $2.5$ ,  $(13.9)$ ,  $M10P1$ . Installation diagrams show the component being mounted into a material with a nut (accessories) and a tapping operation.



BS-26

CODE:72601

BS-26S

CODE:72602

Type: **mounted**  
Function: **midway**  
Material: **brass (nut: steel)**  
Finish: **nickel plating**  
**chrome plating (nut: unichrome plating)**  
—  
Description  
The hole must be  $\phi 10$  to  $\phi 10.5$ .

$\phi 1.0 : 8\text{kg}$   $\phi 1.2 : 10\text{kg}$   $\phi 1.5 : 30\text{kg}$

Technical drawing of BS-26 showing dimensions:  $\phi 16$ ,  $70^\circ$ ,  $12.5$ ,  $14$ ,  $12$ ,  $W3/8$ . Installation diagrams show the component being mounted into a material with a nut (accessories) and a tapping operation.



FK-16S

CODE:11604

Type: **mounted**  
Function: **midway**  
Material: **steel (cover nut: brass)**  
Finish: **color chromate/ chrome plating**  
—  
Description  
The hole must be  $\phi 14.2$  to  $\phi 14.5$ .

$\phi 1.5 : 30\text{kg}$   $\phi 2.0 : 50\text{kg}$   $\phi 2.5 : 70\text{kg}$

Technical drawing of FK-16S showing dimensions:  $\phi 17$ ,  $\phi 8$ ,  $13$ ,  $20$ ,  $39$ ,  $M14P1$ . Installation diagrams show the component being mounted into a material with a nut (accessories) and a tapping operation.



SF-26N-S

CODE:32605

Type: **mounted**  
Function: **midway**  
Material: **stainless, brass (nut: steel)**  
Finish: **matte nickel plating (nut: color chromate)**  
—  
Description  
The hole must be  $\phi 14.2$  to  $\phi 14.5$ .

$\phi 1.5 : 30\text{kg}$   $\phi 2.0 : 50\text{kg}$   $\phi 2.5 : 70\text{kg}$

Technical drawing of SF-26N-S showing dimensions:  $40^\circ$ ,  $\phi 8$ ,  $13$ ,  $21$ ,  $15$ ,  $14$ ,  $\phi 26$ ,  $M14P1$ . Installation diagrams show the component being mounted into a material with a nut (accessories) and a tapping operation.



MK-16S

CODE:181605

Type: **mounted**  
Function: **midway**  
Material: **stainless (cover nut: brass)**  
Finish: **matte nickel plating**  
—  
Description  
The hole must be  $\phi 16.2$  to  $\phi 16.5$ .

$\phi 3.0 : 100\text{kg}$

Technical drawing of MK-16S showing dimensions:  $\phi 18$ ,  $\phi 10$ ,  $15.5$ ,  $9$ ,  $24$ ,  $48.5$ ,  $M16P1$ . Installation diagrams show the component being mounted into a material with a nut (accessories) and a tapping operation.



WF-21B

CODE:562105

Type: **mounted**  
Function: **midway**  
Material: **stainless**

$\phi 3.0 : 100\text{kg}$   $\phi 4.0 : 150\text{kg}$   $\phi 5.0 : 200\text{kg}$   $\phi 6.0 : 300\text{kg}$

Technical drawing of WF-21B showing dimensions:  $\phi 22$ ,  $39$ ,  $83$ ,  $M16P2$ . Installation diagrams show the component being mounted into a material with a nut (accessories) and a tapping operation.



floor



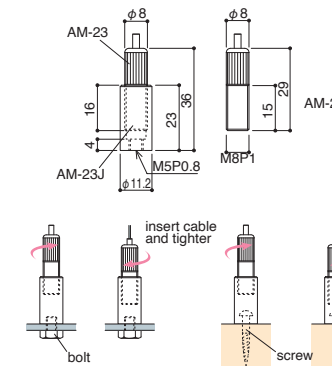
floor / anchor



## AM-23Jset

φ 0.6 φ 0.8

Type: tensioner / bolt anchor  
Function: floor  
Material: brass  
Finish: matte nickel plating



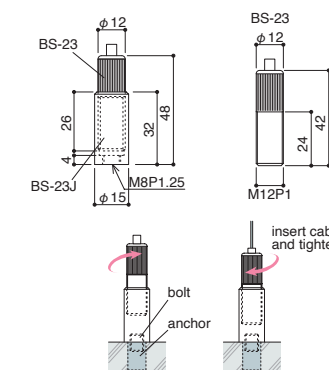
AM-23Jset CODE:262323



## BS-23Jset

φ 1.0 φ 1.2 φ 1.5

Type: tensioner / bolt anchor  
Function: floor  
Material: brass  
Finish: matte nickel plating



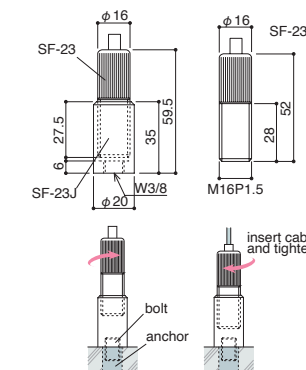
BS-23Jset CODE:72323



## SF-23Jset

φ 1.5 φ 2.0 φ 2.5

Type: tensioner / bolt anchor  
Function: floor  
Material: brass  
Finish: matte nickel plating



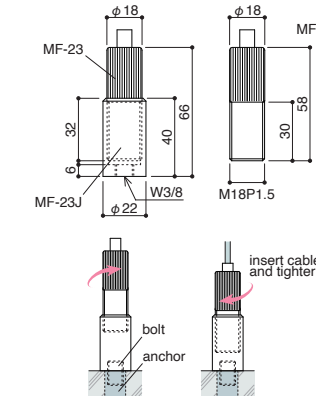
SF-23Jset CODE:32323



## MF-23Jset

φ 3.0

Type: tensioner / bolt anchor  
Function: floor  
Material: brass  
Finish: matte nickel plating



MF-23Jset CODE:182323



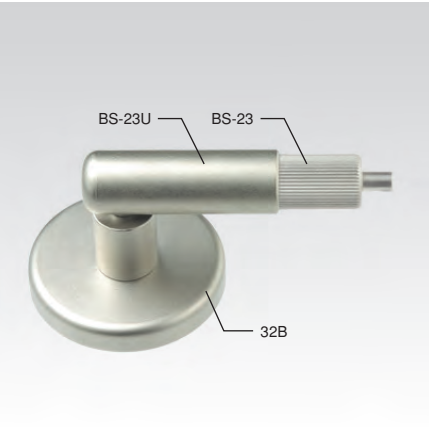
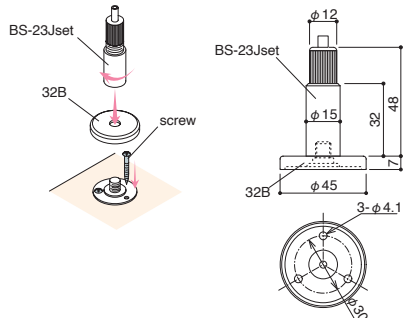


BS-23Jset + 32B

Type: tensioner / screw  
Function: floor  
Material: brass (BS-23 Jset), stainless(32B)  
Finish: matte nickel plating (BS-23 Jset),  
matte(32B)

BS-23Jset CODE:72323  
32B CODE:10013203

φ 1.0 φ 1.2 φ 1.5

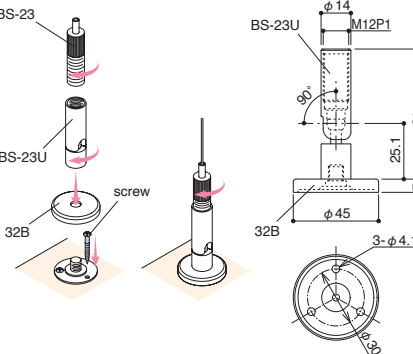


BS-23 + BS-23U + 32B

Type: tensioner / screw /universal  
Function: floor  
Material: brass (BS-23 + BS-23U), stainless(32B)  
Finish: matte nickel plating (BS-23 + BS-23U),  
matte(32B)

BS-23 CODE:72301  
BS-23U CODE:72304  
32B CODE:10013203

φ 1.0 φ 1.2 φ 1.5

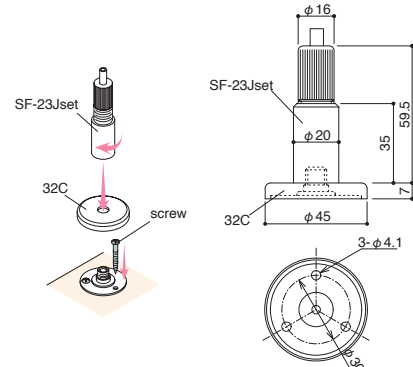


SF-23Jset + 32C

Type: tensioner / screw  
Function: floor  
Material: brass (SF-23Jset), stainless(32C)  
Finish: matte nickel plating (SF-23Jset),  
matte(32C)

SF-23Jset CODE:32323  
32C CODE:10013202

φ 1.5 φ 2.0 φ 2.5

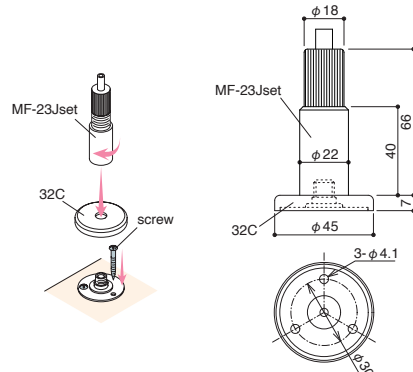


MF-23Jset + 32C

Type: tensioner / screw  
Function: floor  
Material: brass (MF-23Jset), stainless(32C)  
Finish: matte nickel plating (MF-23Jset),  
matte(32C)

MF-23Jset CODE:182323  
32C CODE:10013202

φ 3.0

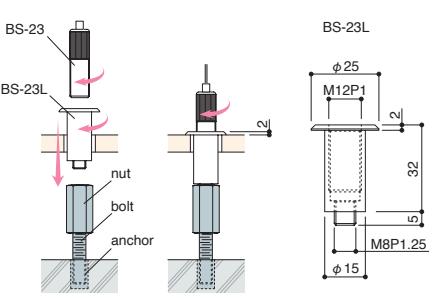


BS-23 + BS-23L

Type: tensioner / floor mounted  
Function: floor  
Material: brass  
Finish: matte nickel plating

BS-23 CODE:72301  
BS-23L CODE:72303

φ 1.0 φ 1.2 φ 1.5

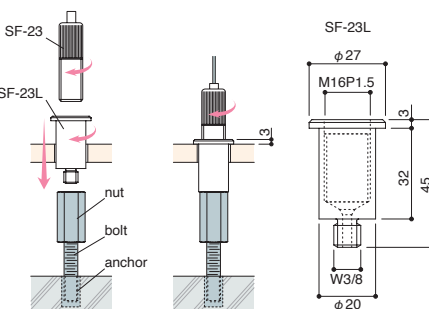


SF-23 + SF-23L

Type: tensioner / floor mounted  
Function: floor  
Material: brass  
Finish: matte nickel plating

SF-23 CODE:32301  
SF-23L CODE:32316

φ 1.5 φ 2.0 φ 2.5



Seibu Shibuya 5th Floor for women's "MODE PLUS"  
client: Sogo & Seibu Co., Ltd  
design: Sahori Ohsawa, Yuko Nagayama & Associates  
photo: Nacasa & Partners Inc.

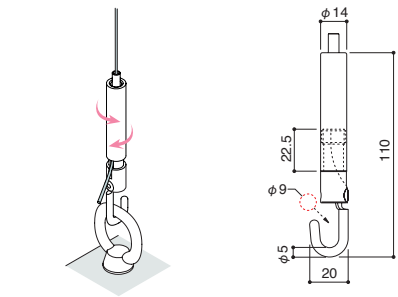




TF-20+T

φ 1.5 : 30kg φ 2.0・φ 2.5 : 50kg

Type: tensioner / hook  
Function: floor  
Material: stainless, brass  
Finish: matte nickel plating



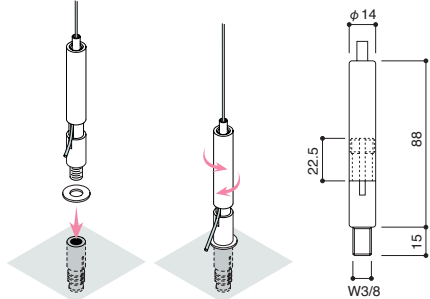
TF-20+T CODE:42001



TF-18+T

φ 1.5 : 30kg φ 2.0 : 50kg φ 2.5 : 70kg

Type: tensioner / anchor  
Function: floor  
Material: stainless, brass  
Finish: matte nickel plating



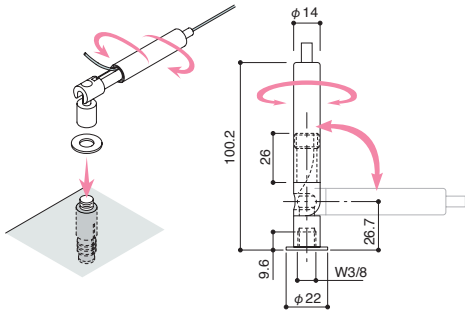
TF-18+T CODE:41801



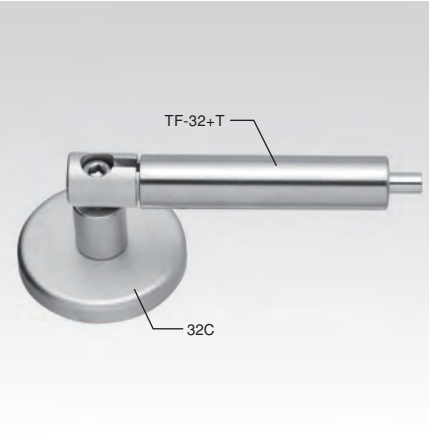
TF-32+T

φ 1.5 : 30kg φ 2.0 : 50kg φ 2.5 : 70kg

Type: tensioner / anchor /universal  
Function: floor  
Material: stainless, brass  
Finish: matte nickel plating



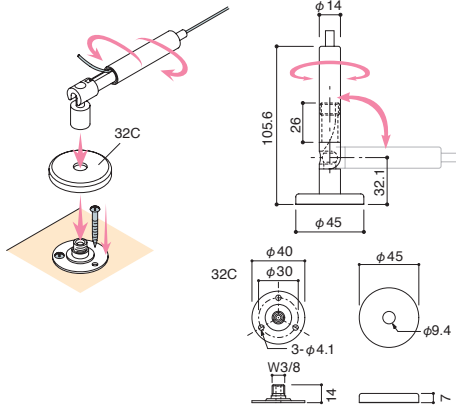
TF-32+T CODE:43201



TF-32+T + 32C

φ 1.5 : 30kg φ 2.0 : 50kg φ 2.5 : 70kg

Type: tensioner / screw /universal  
Function: floor  
Material: stainless, brass (TF-32+T), stainless(32C)  
Finish: matte nickel plating (TF-32+T), matte(32C)



TF-32+T CODE:43201

32C CODE:10013202

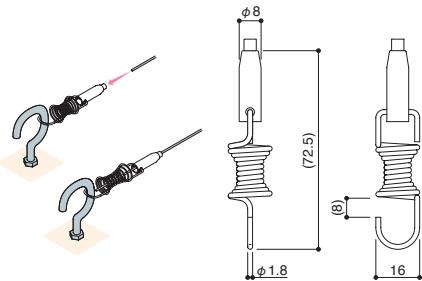


SP-1

φ 1.0 φ 1.2 φ 1.5

Type: hook / tensioner  
Function: floor  
Material: stainless  
Finish: satin

Description  
Spring's safety load: 2.5kg



SP-1 CODE:210101

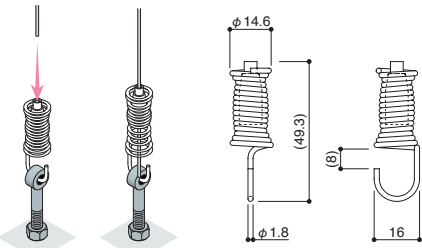


SP-3

φ 1.0 φ 1.2 φ 1.5

Type: hook / tensioner  
Function: floor  
Material: stainless

Description  
Spring's safety load: 2.5kg



SP-3 CODE:210103

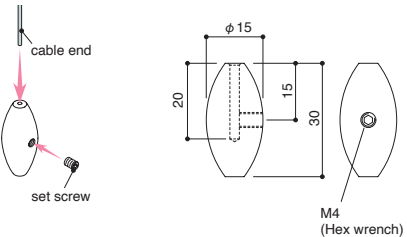


CE-3

φ 0.6 - φ 2.5

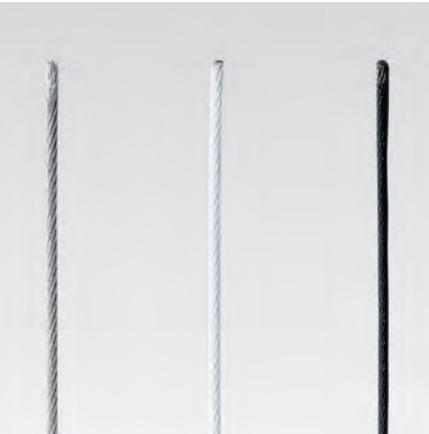
Type: wire end  
Function: midway  
Material: brass  
Finish: matte nickel plating

Description  
CE-3 is to prevent taking away the hanging item.  
CE-3 do not have the gripper mechanism.



CE-3 CODE:180503



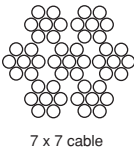


# Stainless Steel Cable


Function: **wire cable**  
Material: **stainless**

Description

- Our products should only be used with 7×7 aircraft cable.
- We provide cable with soldered ends basically. We can also provide cable with loop and ball stop. Please contact to us if you like detailed information.
- If cutting cable on your own, use appropriate cable cutters and solder the cable. Cable ends must be neat and clean to avoid fraying, and allow glue to dry completely before installing the cable into the gripper.



LINE UP CODE

item	color	cable diameter	1m	2m	3m	5m	10m	50m	100m
Cable soldered end 	silver	φ0.6	90010610	90010620	90010630	90010650	90010691	——	90010690
		φ0.8	90010810	90010820	90010830	90010850	90010891	——	90010890
		φ1.0	90011010	90011020	90011030	90011050	90011091	90011095	90011090
		φ1.2	90011210	90011220	90011230	90011250	90011291	——	90011290
		φ1.5	90011510	90011520	90011530	90011550	90011591	90011595	90011590
		φ2.0	90012010	90012020	90012030	90012050	90012091	90012095	——
		φ2.5	90012510	90012520	90012530	90012550	90012591	90012595	——
		φ3.0	90013010	90013020	90013030	90013050	90013091	90013095	——
		φ5.0	Please contact us if you like detailed information				——	——	——
		φ6.0					——	——	——
	white	φ1.2	90231210	90231220	90231230	90231250	90231291	——	90231290
		φ1.5	90251510	90251520	90251530	90251550	90251591	——	90251590
	black	φ1.2	90241210	90241220	90241230	90241250	90241291	——	90241290
		φ1.5	90261510	90261520	90261530	90261550	90261591	——	90261590

JAPAN SHOP 2016  
DSA design award silver prize





# INDEX

## 0-9

32B	76
32C	76, 78

## A

AD-1	70
AF-3 black	51
AF-3 chrome	51
AF-3 SUS	51
AF-3 white	51
AF-3P black	51
AF-3P chrome	51
AF-3P SUS	27, 51
AF-3P white	51
AK-14	72
AL-1	47
AM-20	51
AM-23	41
AM-23J-R	41
AM-23Jset	75
AM-26	72
AM-32R-R	36, 40
AMT-5	43
AT-1 white	43
AT-5	43
AU-72 black	71
AU-72 silver	71

## B

B5R6	72
B5R6-S	72
BRB-1S	56
BRB-2S	56
BRG-1S	60
BRG-2S	60
BRL-1S	58
BS-16	55
BS-20RP	26, 52
BS-20RP-S	26, 52
BS-22	54

BS-23	41, 76, 77
BS-23J-Rset	41
BS-23Jset	75, 76
BS-23L	77
BS-23U	76
BS-23U-R	41
BS-25	47
BS-26	72
BS-26S	72
BS-27	44
BS-302	70
BS-30B	70
BS-30B-S	70
BS-31	67
BS-32+T	46
BS-32R-R black	36, 40
BS-32R-R silver	36, 40
BS-32R-R white	36, 40
BS-32U-R	36
BS-35	57
BS-35+R	59
BS-35S	57
BS-36D-R	36
BS-38+T	45
BU-70	58
BU-72	71
BSC-1G set	63
BSC-1S set	63
BSK-1G	65
BSK-1S	65
BSU-1G	64
BSU-1S	64

## C

CE-3	79
CF-1 white	23
CR-1	22
CRE 1800 white	23
CRJ 2000 white	22

## F

FK-16S	73
FRB-1S	56
FRB-2S	56
FRG-1S	60
FRG-2S	60

## H

HJ-HD cableset	17
----------------	----

## J

J1-01	16
J1-03	18, 20, 22, 34, 35, 38, 39

## K

KH-1S	27, 53
KH-2S	27, 53

## M

MC-10 2000 silver	34
MC-10 2000 white	34
MC-10H 2000 black	34
MC-10E black	34
MC-10E silver	34
MC-10E white	34
MC-11 2000 black	35
MC-11 2000 silver	35
MC-11 2000 white	35
MC-11E black	35
MC-11E silver	35
MC-11E white	35
MF-16S	53
MF-21S	52
MF-23Jset	75, 76
MF-23L	77
MF-25	47
MF-27	44
MF-30S	70

MF-32+T-S	46
MF-35+R-S	59
MF-35S	57
MF-38	45
MH-1 2000 silver	38
MH-1E	38
MH-3 2000 white	20, 39
MH-3E white	20, 39
MK-16S	73
MR-3 2000 silver	18
MR-3E	18
MRD-32	18

## P

PPH-1PR silver	68
PPH-1R-620 silver	68

## R

RB-15	24, 48
RB-30	24, 48

## S

SF-16	55
SF-16S	55
SF-20RP	26, 52
SF-20RP-S	26, 52
SF-21	54
SF-23	77
SF-23Jset	75, 76
SF-23L	77
SF-25	47
SF-25S	47
SF-26N-S	73
SF-27	44
SF-302	70
SF-30B	70
SF-30B-S	70
SF-31L-S	67
SF-31S	67
SF-32+T	46

SF-32R-R	20, 40
SF-35	57
SF-35+R	59
SF-35S	57
SF-38	45
SFK-1L-S	66
SFK-1S	66
SM-20VKP-S	27, 53
SM-20VP	26, 52
SM-20VP-S	26, 52
SP-1	79
SP-3	79
Stainless Steel Cable	25, 80
SU-70	58

## T

TF-18+T	78
TF-18+TR-R	41
TF-20+T	78
TF-32+T	78

## V

VF-20S	26, 52
VH-4 2000 silver	16
VH-4E	16
VJ-HD 3010	17
VJ-HD 3020	17
VJ-HD 3030	17
VJ-HD 4010	17
VJ-HD 4020	17
VJ-HD 4030	17

## W

WF-16	55
WF-21	54
WF-21B	73
WF-32+T	46

# Showroom in Tokyo and Milan

## HQ and Tokyo showroom "TIERS"



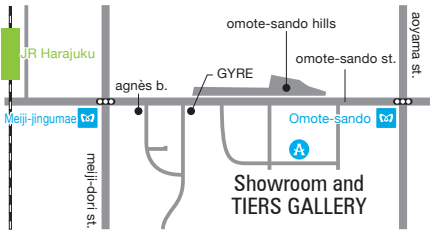
iF DESIGN AWARD 2019  
DFA Design for Asia Awards 2018 Merit Award  
IDA Design Award 2017 Bronze



The concept of TIERS, the headquarters building of Arakawa & Co., Ltd. located in Omotesando in Tokyo, is a showroom and gallery that is not restricted to professionals, but open to the city. It creates an open environment in which people passing through the city can freely visit. Tiers includes a grand staircase leading from the exterior city street to inside the foyer, a terrace on the middle floor, and eventually, the top floor, with a façade of interlinking wire cable patterns, gradually creating a continuous space with the city. On the middle floor, the staircase diverges into a culvert-like terrace, thus connecting with the space within as well.

### address

5-7-12 Jingumae, Shibuya-ku, Tokyo, 150-0001  
mail: [tokyo@arakawagrip-global.com](mailto:tokyo@arakawagrip-global.com)  
[ by appointment only ]



## Milan showroom

### address

Via Pinamonte da Vimercate 6, 20121 Milano (IXI S.R.L.)  
mail: [milano@arakawagrip-global.com](mailto:milano@arakawagrip-global.com)  
[ by appointment only ]



## PRODUCTS | Global 03

published in November 2022  
[arakawagrip-global.com](http://arakawagrip-global.com)

[f](#) [i](#) [p](#) [in](#) #arakawagrip